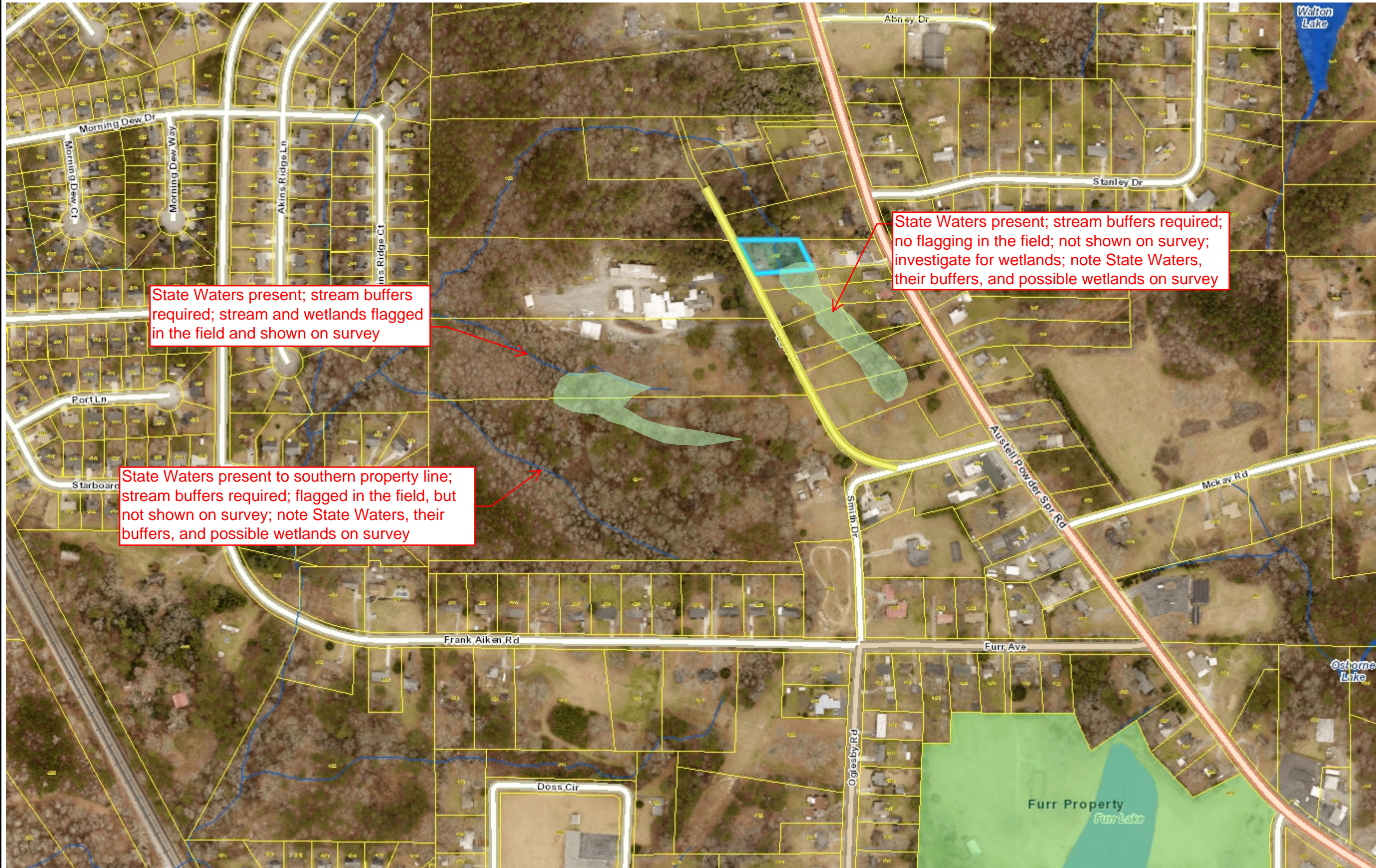


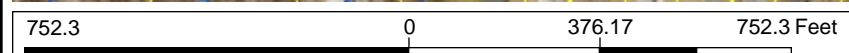


DUGGER DRIVE PROPERTY
FIELD SURVEY BY KOBYLUS ON 02/07/2022 AND 02/11/2022



- Legend**
- Cobb Parcels
 - Administrative Facilities
 - Libraries
 - Police Stations
 - Fire Stations
 - County Parks
 - Federal Parks
 - Rivers
 - Lakes
- Cobb Roads**
- Interstates
 - Arterials
 - Major Collectors
 - Minor Collectors
 - Local
 - Local-Private
 - Ramps
- Railroads**
- Railroads
- Ortho**
- Red: Band_1
 - Green: Band_2
 - Blue: Band_3

Map Notes:
Jennifer A. Kobylus, CFM, CPESC
Stormwater Manager
City of Powder Springs, Georgia
Dept of Community Development
P.O. Box 46
Powder Springs, GA 30127
jkobylus@cityofpowdersprings.org
T: 770-943-1666 ext. 354



WGS_1984_Web_Mercator_Auxiliary_Sphere
© Cobb County Georgia

1: 4,514



This map is a user generated static output from an Internet mapping site and is for reference only. Data layers that appear on this map may or may not be accurate, current, or otherwise reliable.
THIS MAP IS NOT TO BE USED FOR NAVIGATION