



Linear Park Master Plan

13 July 2016



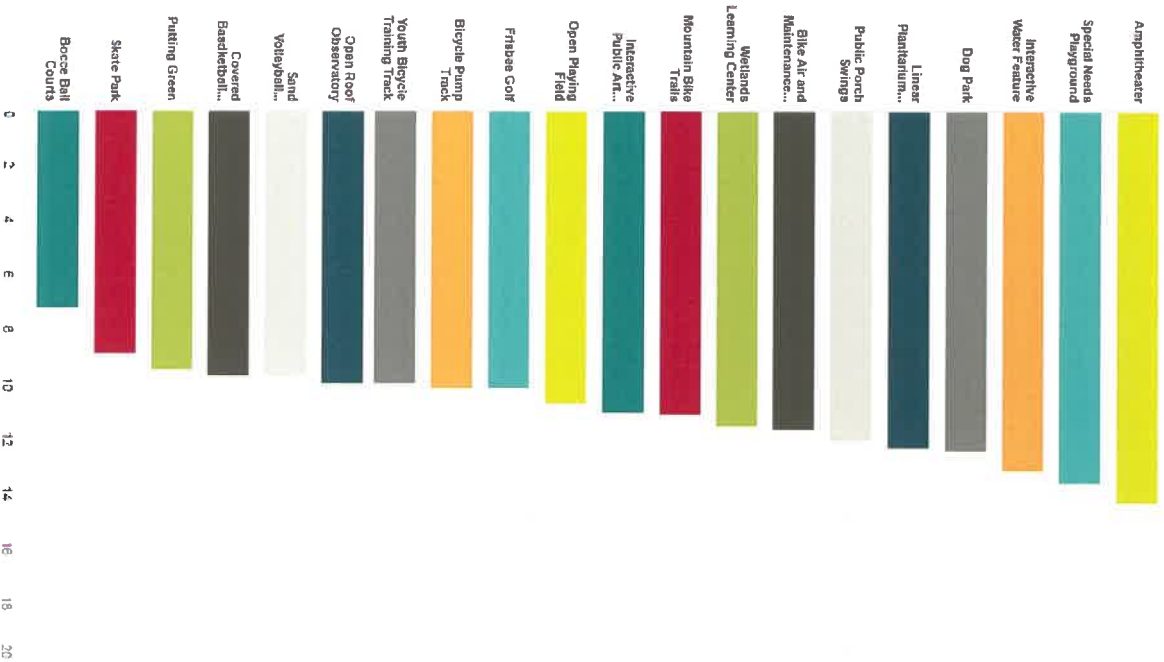
Survey Results



Park Features Survey Results

Which of the below features would you like to see in any of the City of Powder Springs Parks? Rank each feature on a scale of 1-20 with 1 being your first choice and 20 your last.

Answered: 72 Skipped: 4



RESULTS

In ranking order:

1. Amphitheater
2. Special Needs Playground
3. Interactive Water Feature
4. Dog Park
5. Linear Planetarium
6. Public Porch Swings
7. Bike Air and Maintenance Stations
8. Wetlands Learning Center
9. Mountain Bike Trails
10. Interactive Public Art
11. Open Playing Field
12. Frisbee Golf
13. Bicycle Pump Track
14. Youth Bicycle Training Track
15. Open Roof Observatory
16. Sand Volleyball Court
17. Covered Basketball Court
18. Putting green
19. Skate Park
20. Bocce Ball Courts

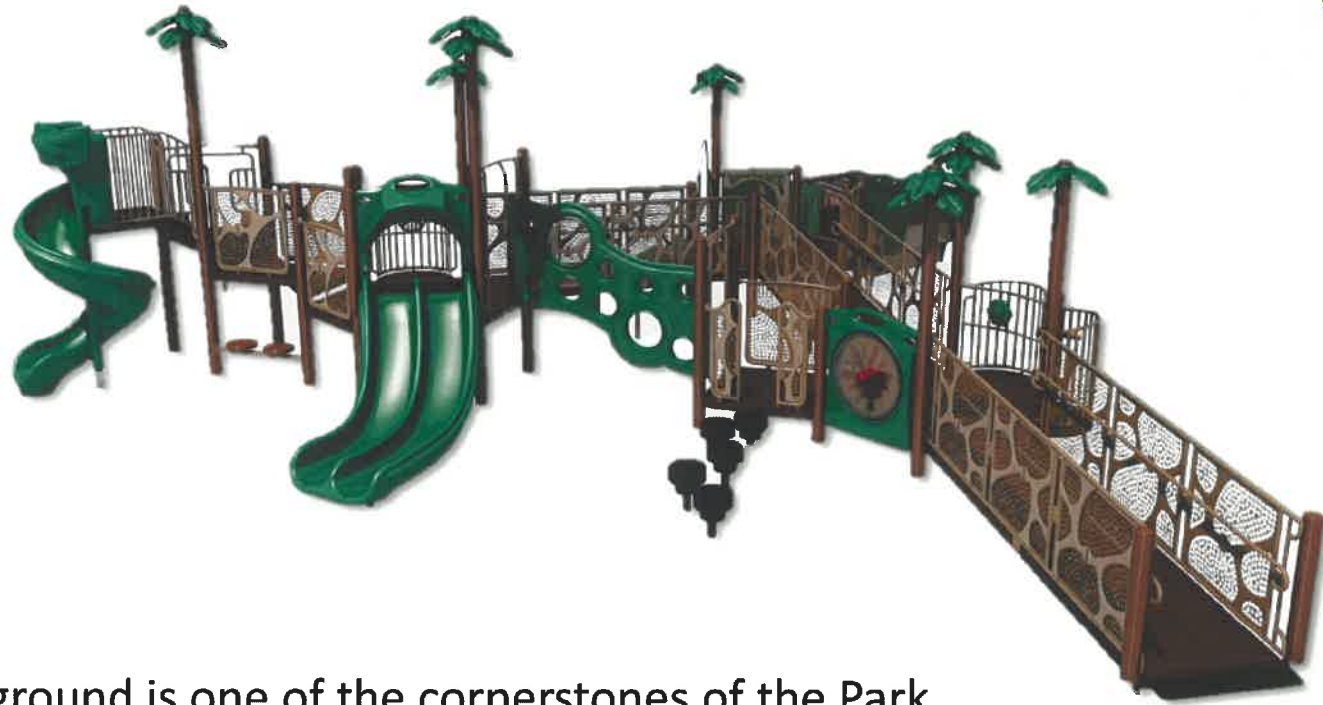
Survey



Write-in Suggestions:

1. Interactive robotics and engineering learning center.
2. A pool for adults. The kids have the water park. What about a pool for adults to relax at? And by adults, I don't just mean seniors - some of us 38 year olds don't want to be around kids, too. Would also love to see more places to take a picnic. A place that had lots of picnic spots or even picnic tables that were not on top of each other. Again, a place where 2 adults (and maybe their dog) could go and sit with a nice view and have lunch but not have other people's kids running all around them.
3. More emergency stations for 911 assistance.
4. Water sheds (fountains) that offers filtered water to refill water bottles.
5. I would like for the passive walking area to be improved so that it doesn't flood when it rains... perhaps, build bridges over areas that do flood.
6. A few more 911 button poles.
7. A rubber 4-8 lane track and field track.
8. A rubber 4-8 track lane.
9. 4-6 lane track.
10. I would like to see a 4-8 lane rubber track. Powder Springs has a youth track league but they don't have a track to practice on.
11. A rubber track 8 lanes.
12. #1 an outdoor track with 4-8 lanes...rubber track. Thanks.
13. The covered BB course should be large enough to hold local or regional toureymys. They should have lights, too. We have plenty of lakes in P.S. Docks and non-motorized boat ramps is another consideration. Nice work, guys! Keep it going!
14. Picnic tables.
15. Croquet green.
16. We need a nice dog park. Need.
17. Drink / snack places along the trail.

Special Needs Playground



A Special Needs Playground is one of the cornerstones of the Park Master Plan. This feature will allow all kids the opportunity to enjoy playing together in an interactive and fun environment. In the Park Features Survey, this feature was ranked second. Many different municipalities have seen great interaction and success with these features in the past. This will allow the City to continue to grow the Linear Park into a destination for everyone.

Parking Addition

A Parking Addition is a much needed expansion of the existing park. This would create an additional 50 spaces to help accommodate the extensive parking needs created by the parks popularity demand. This would also give an opportunity to add additional handicap spaces to the parking area.



Covered Basketball Court



A Covered Basketball Court would be a great addition to The Linear Park by creating a great environment for people to come play basketball in a sheltered environment that protect against weather elements. This feature would also compliment the existing Adult Outdoor Fitness Facility.

Dog Park

A Dog Park is a highly sought after amenity that would make a great addition to The Linear Park. This paired with the other great amenities that are proposed would make a great family friendly environment that encompasses all aspects of the family. Dog Parks are fast growing highly sought after amenities that are a great addition to any city.



Trail Head



The Trail Heads are a great addition for The Linear Park. These can be placed at key areas and provide access to The Silver Comet Trail. The Trail Heads are a vital part of the Park Masterplan because they give people an entrance into the park and the trail.



Skate Park

A Linear Skate Park would consist of many different linear obstacles for the skaters to maneuver and interact with to create a fun and challenging environment. The use of a Linear Skate Park would also help maintain the aesthetically appealing part of the Linear Park Property.



Slope Clearing and Landscaping



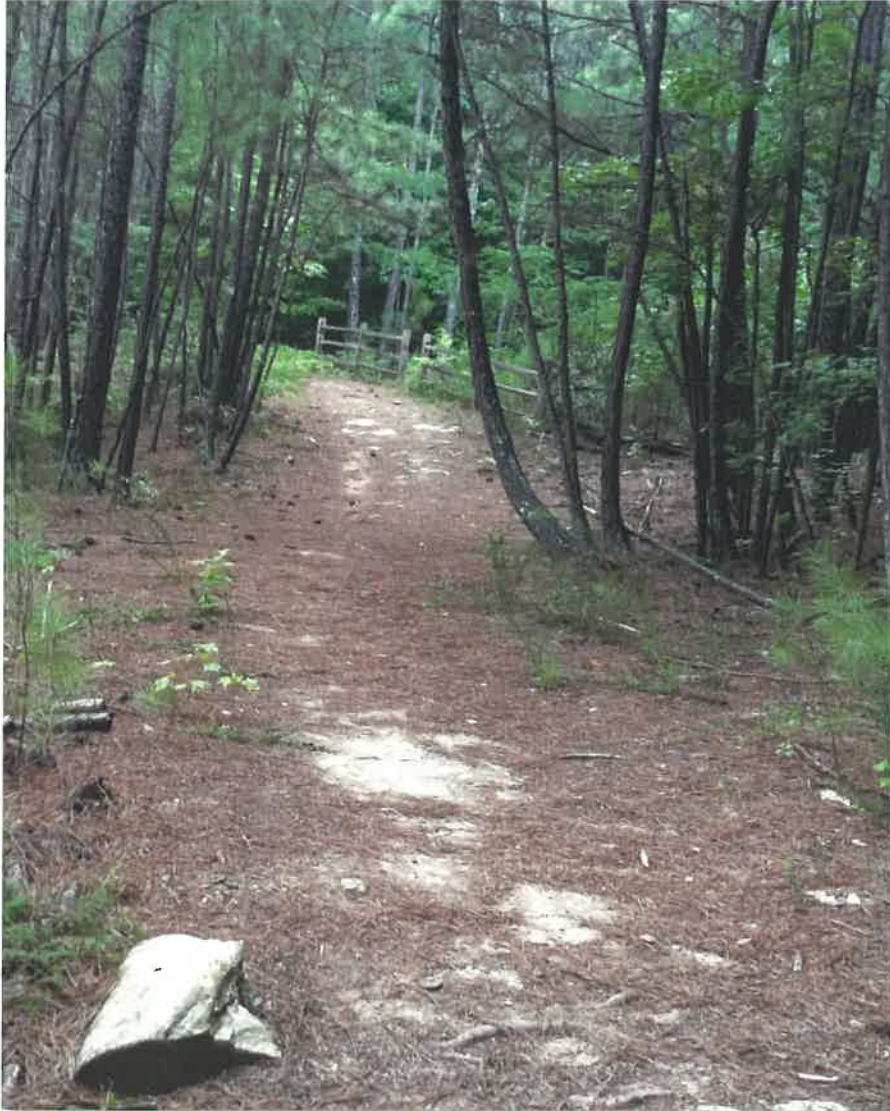
Slope Clearing and Landscaping is a vital part to the overall appearance of The Linear Park. This creates a clean and appealing environment for the more isolated and challenging areas. The addition of Slope Clearing and Landscaping will help to keep the park looking great for years to come.

Parking

The addition of these three new parking lots will create the necessary access to enjoy the further away sections of the park. These parking areas will create a welcoming feeling to the park by making it easy to enjoy all the features without any extraneous walks to get to the desired feature.



Trails



The use of walking trails in the natural areas will create a shaded retreat for people to enjoy instead of walking on the comet. This will give people the nature feeling they love so much, but will also be conveniently located to other features.

Open Play Field



Open Play Fields are a great use of land and creates an environment where people can come in a community setting and use the green space to throw a baseball, football, Frisbee or any other outdoor activity they would like to do. The Open Play Field allows people to use a big open green space in many ways to meet their needs and it gives the unified feeling of a community.



Boardwalk Area



The Boardwalk Area will be a great addition to The Linear Park by creating an educational and observation area to incorporate the Wetlands into the park. This is already in use as part of the Lucille Trail. This Boardwalk will give people the opportunity to be in the middle of the Wetlands while observing and learning about them.

Wetlands Learning Center



A Wetlands Learning Center would be a great addition to the Linear Park. The center would give people including school groups the opportunity to come and learn in the natural environment about one of the most important natural habitats we have. This gives a chance for people to get out from behind a computer and learn in person where they can see nature first hand.

