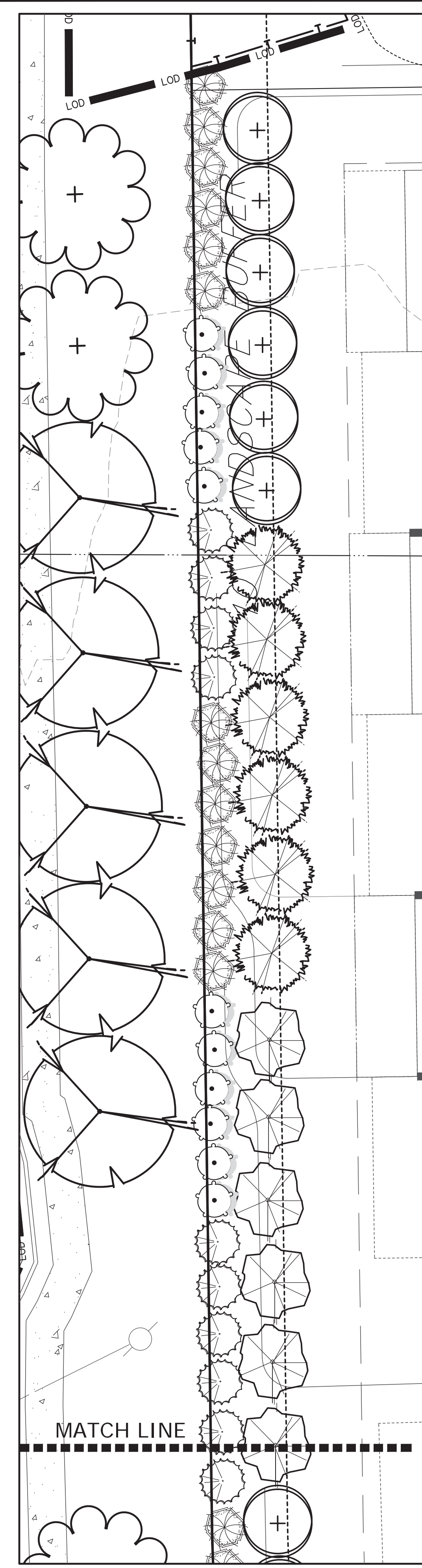
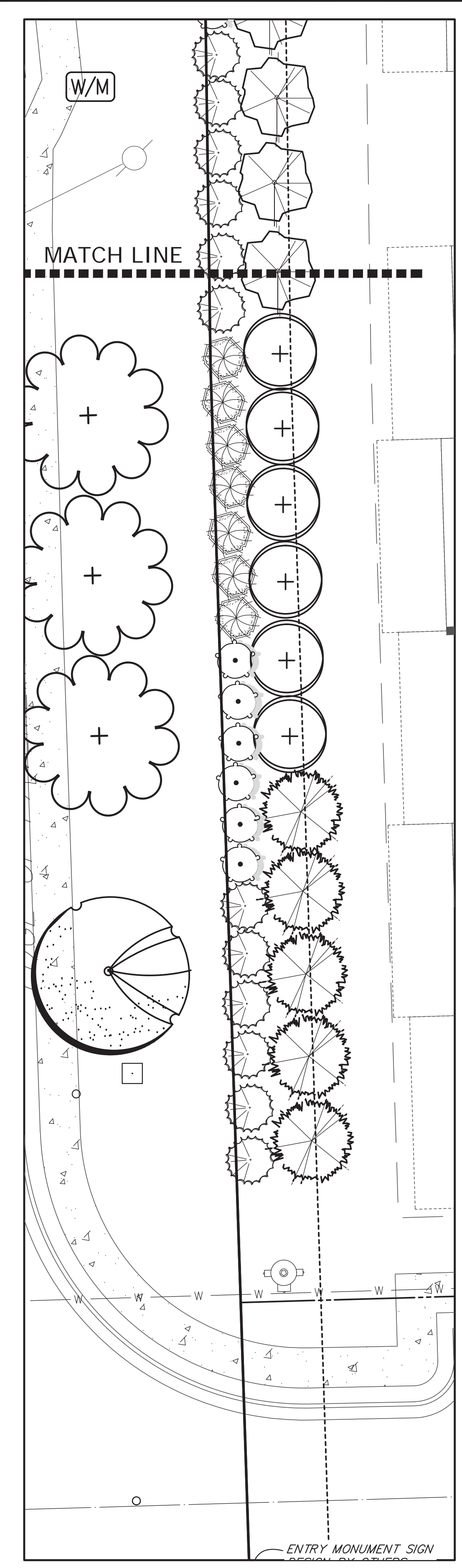


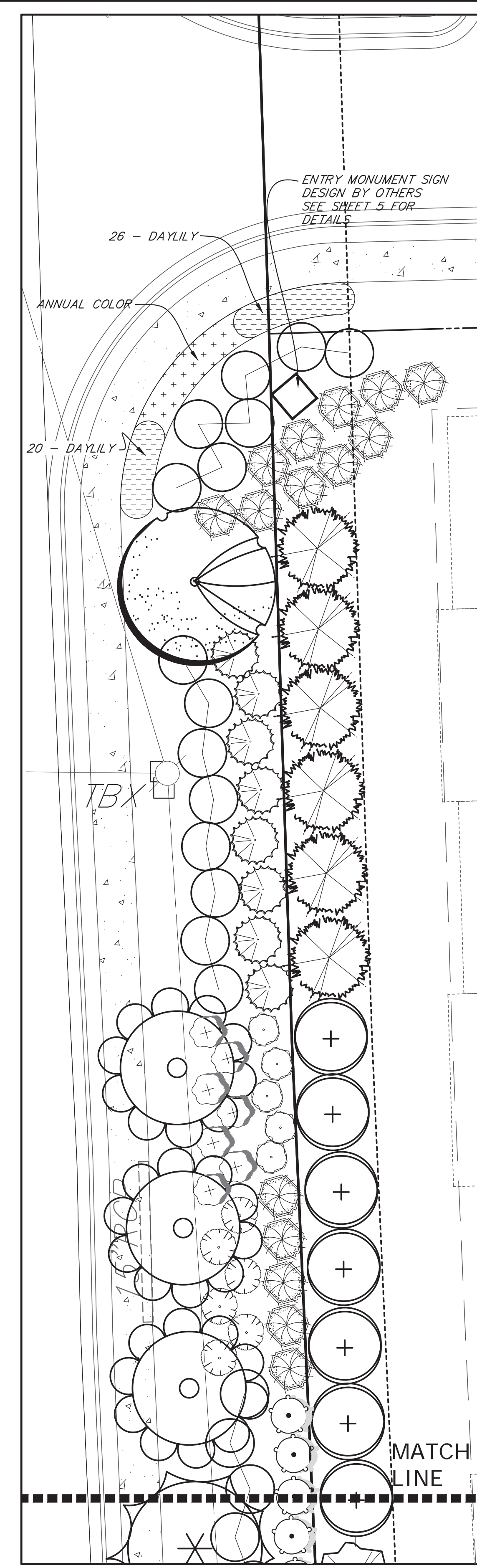
Drawing name: P:\Evergreen DRES\new macland road\new macland road-tree.dwg TREE (2) May 26, 2023 10:56am by: Sally Jordan



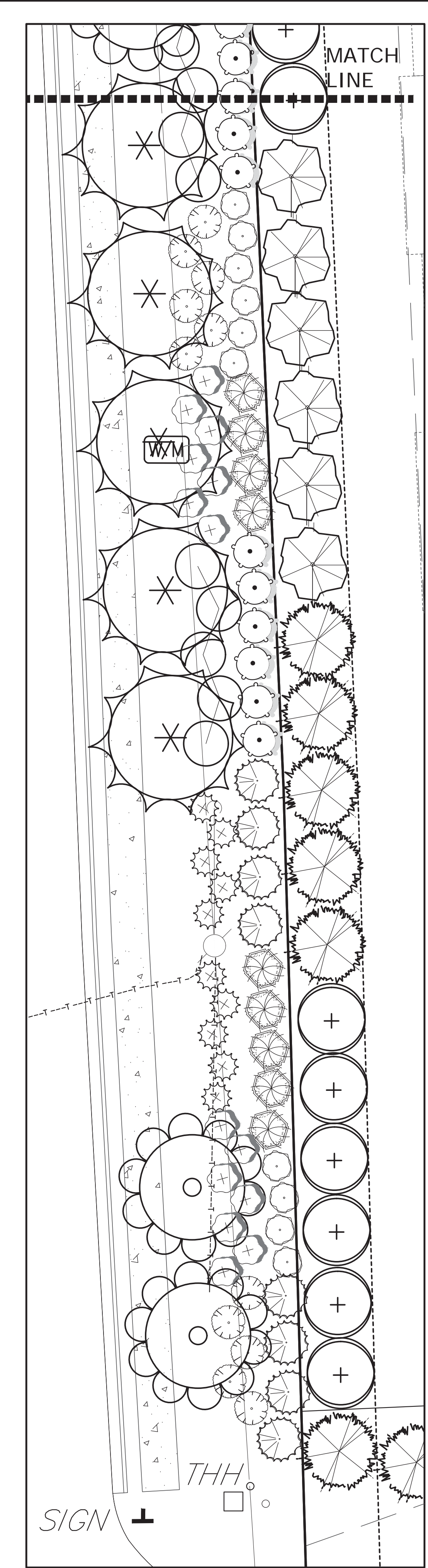
**LANDSCAPE STRIP DETAIL  
NORTH OF PROPOSED ROAD  
SCALE: 1"=10'**



**LANDSCAPE STRIP DETAIL  
NORTH OF PROPOSED ROAD  
SCALE: 1"=10'**

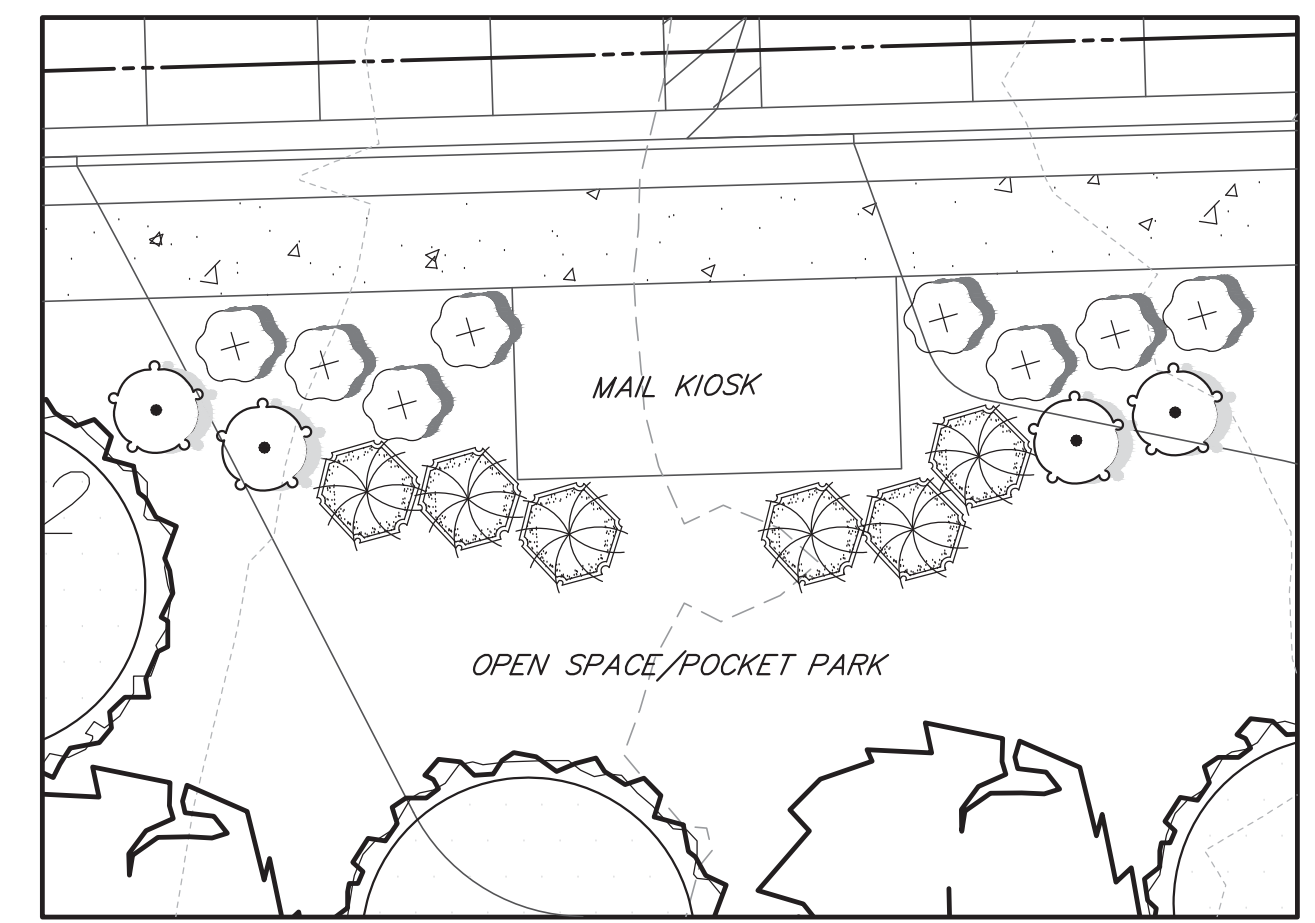


**LANDSCAPE STRIP DETAIL  
SOUTH OF PROPOSED ROAD  
SCALE: 1"=10'**



**LANDSCAPE STRIP DETAIL  
SOUTH OF PROPOSED ROAD  
SCALE: 1"=10'**

- TREE NOTES:**
- TREES SELECTED FOR PLANTING MUST MEET MINIMUM REQUIREMENTS AS PROVIDED BELOW AND IN THE AMERICAN STANDARD OF NURSERY STOCK.
  - TREES SELECTED FOR PLANTING MUST BE FREE FROM INJURY, PESTS, DISEASE, OR NUTRITIONAL DISORDERS, AND MUST BE OF GOOD VIGOR IN ORDER TO ASSURE A REASONABLE EXPECTATION OF SURVIVABILITY.
  - TREES SELECTED FOR PLANTING MUST BE OF GOOD VIGOR. THE DETERMINATION OF VIGOR IS A SUBJECTIVE EVALUATION, AND DEPENDENT UPON SPECIES VARIABILITY. THE FOLLOWING CRITERIA IS GENERALLY USED FOR THE DETERMINATION OF VIGOR:
    - FOLIAGE SHOULD HAVE A GREEN OR DARK GREEN COLOR. VIGOROUS TREES WILL HAVE LARGE LEAVES AND DENSE FOLIAGE WHEN COMPARED TO TREES WITH POOR VIGOR.
    - SHOOT GROWTH FOR MOST VIGOROUS TREES WILL BE AT LEAST 1 FOOT PER YEAR. AT LEAST 1/3 OF THE BRANCHES SHOULD ARISE FROM THE TOP 1/3 AND 1/3 FROM THE CENTER 1/3.
    - BARK TEXTURE CAN DENOTE VIGOR. SMOOTH OR SHINY BARK ON THE TRUNK AND BRANCHES OF A YOUNG TREE USUALLY SIGNIFIES GOOD VIGOR, CONVERSELY, ROUGH AND FULL BARK COULD INDICATE POOR VIGOR.
    - TRUNK TAPER. THE TRUNKS OF VIGOROUS TREES WILL GENERALLY HAVE AN INCREASE IN DIAMETER WITH A DECREASE IN HEIGHT. TREES WITH REVERSE TAPERS OR NO TAPER SHOULD BE AVOIDED.
    - ROOT COLOR. YOUNG ROOTS OF MOST TREES WILL BE LIGHT IN COLOR.
  - TREES SELECTED FOR PLANTING MUST BE FREE OF ROOT DEFECTS. TWO TYPES OF ROOT DEFECTS GENERALLY OCCUR:
    - KINKED ROOTS, IN WHICH TAPROOTS, MAJOR BRANCH ROOTS, OR BOTH ARE BENT MORE THAN 90 DEGREES WITH LESS THAN 20 PERCENT OF THE ROOT SYSTEM ORIGINATING ABOVE THE KINK. A TREE WITH SUCH ROOTS WILL PROBABLY BEND AT THE SOIL LINE WHEN RELEASED FROM A SUPPORTING STAKE.
    - CIRCLING OR GIRDLING ROOTS WHICH CIRCLE 80 PERCENT OR MORE OF THE ROOT SYSTEM BY 360 DEGREES OR MORE. A TREE WITH SUCH ROOTS WOULD ULTIMATELY HAVE LESS THAN 20 PERCENT OF ITS SYSTEM AVAILABLE FOR SUPPORT.
  - STANDARDS FOR TRANSPLANTING SHALL BE IN KEEPING WITH THOSE ESTABLISHED IN THE INTERNATIONAL SOCIETY OF ARBORICULTURE PUBLICATION, "TREE AND SHRUB TRANSPLANTING MANUAL" OR SIMILAR PUBLICATION. REFERENCE THE AMERICAN ASSOCIATION OF NURSERYMEN PUBLICATION "AMERICAN STANDARD FOR NURSERY STOCK" (ANSI Z60, 1973) FOR PLANT MATERIAL QUALITY SPECIFICATIONS. REFERENCE THE LATEST EDITION OF THE "MANUAL FOR WOODY LANDSCAPE PLANTS: MICHAEL DIRR, ISA GUIDELINES AND ANSI STANDARDS, OR SIMILAR PUBLICATION FOR INFORMATION ON SITE REQUIREMENTS FOR VARIOUS TREE SPECIES.



**MAIL KIOSK DETAIL 1"=10'**

- LEGEND**
- ⊕ ABELIA
  - ⊙ GOLD MOP
  - ⊗ INKBERRY
  - ⊛ LOROPETALUM
  - ⊘ LIGUSTRUM
  - ⊚ KNOCK-OUT ROSE
  - ⊙ G.G. ARBORVITAE
  - JUNIPER

**NOTE**

ALL QUANTITIES ARE FOR A GENERAL GUIDE ONLY. CONTRACTOR SHALL CONFIRM ALL QUANTITIES PRIOR TO BIDDING AND INSTALLATION. GASKINS + LECRAW, INC. SHALL TAKE NO RESPONSIBILITY FOR THE ACCURACY OF THE QUANTITIES PROVIDED.

24 HR. PHONE & EMERGENCY CONTACT:  
**LEVI STONER**

PREPARED IN THE OFFICE OF:

**GASKINS + LECRAW**

© 2023 GASKINS + LECRAW, INC.  
1266 POWDER SPRINGS ROAD  
MARIETTA, GA 30067  
PHONE: [REDACTED]  
FAX: [REDACTED]  
www.gaskinslecrow.com  
LSF001371

REVISIONS:		DATE	DESCRIPTION
REV11	REVDESC11		
REV10	REVDESC10		
REV9	REVDESC9		
REV8	REVDESC8		
REV7	REVDESC7		
REV6	REVDESC6		
REV5	REVDESC5		
REV4	REVDESC4		
REV3	REVDESC3		
REV2	REVDESC2		
REV1	REVDESC1		
REV0	REVDESC0		

**PROJECT**

**NEW MACLAND ROAD**  
LAND LOTS 682 & 725, 19TH DISTRICT, 2ND SECTION  
CITY OF POWDER SPRINGS, COBB COUNTY, GEORGIA

**CLIENT**

**GEORGIA CAPITAL**  
400 GALLERIA PARKWAY, SUITE 1130  
ATLANTA, GEORGIA 30339

**DESIGN PROFESSIONAL**

ISA CERTIFIED ARBORIST  
NO. 50-5609-A

CALL BEFORE YOU DIG

Know what's below.  
Call before you dig.

**SCALE & NORTH ARROW:**

**SURVEY INFO:**

DRAWN BY:	SJJ
REVIEWED BY:	SJJ
FIELD DATE:	5-19-23
OFFICE DATE:	5-25-23
JOB #:	2305025