

TERRATORY

Development Consultants

514 West Maple Street, Suite 1201, Cumming, Georgia 30040
Phone: (770) 931-8601 Fax: (770) 931-8037

OWNER/ DEVELOPER:

GRAND COMMUNITIES, LLC

3940 Olympic Blvd
Suite 100
Erlanger, Kentucky 41018
Phone: (404) 418-8942

24- HOUR CONTACT:

PROJECT:

SPRINGBROOKE UNIT II PHASES 1-5

LAND LOTS 975, 976, 1023 & 1024
19th DISTRICT, 2nd SECTION
CITY OF POWDER SPRINGS
COBB COUNTY, GEORGIA

SHEET TITLE:

TERRATORY FLOODPLAIN / SEWER EXHIBIT

DRAWING DATE: JULY 16, 2018

DRAWING SCALES

HORIZONTAL SCALE: 1"=50'

VERTICAL SCALE: N/A

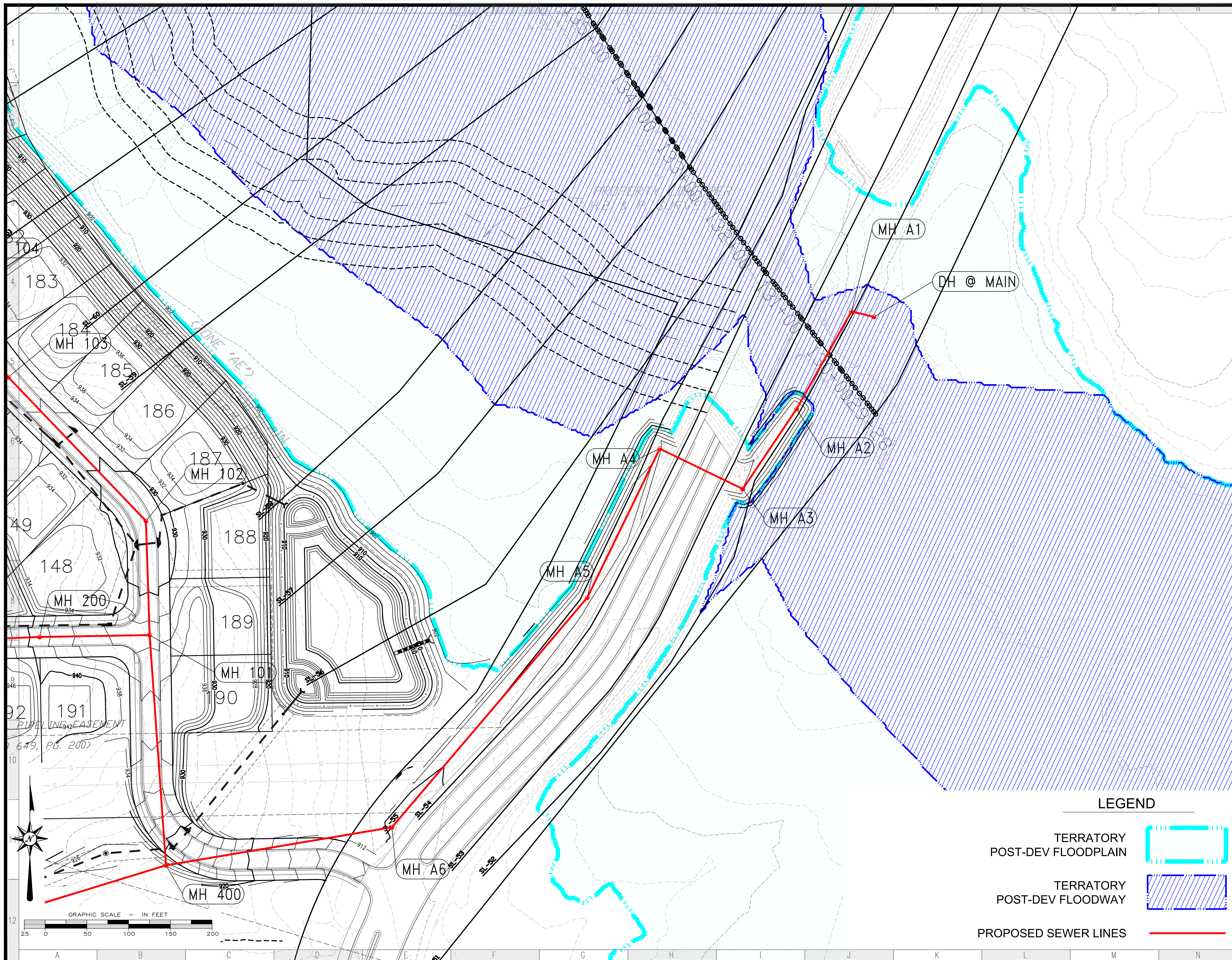


SHEET REVISIONS

NO.	DESCRIPTION	DATE
1		
2		
3		
4		
5		

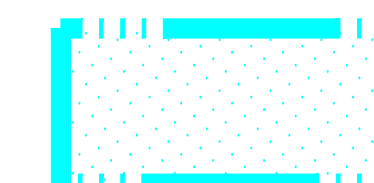
SHEET:

EXHIBIT

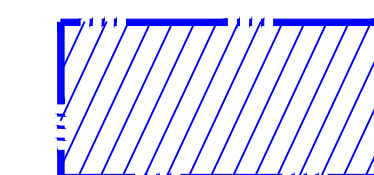


LEGEND

TERRATORY
POST-DEV FLOODPLAIN



TERRATORY
POST-DEV FLOODWAY



PROPOSED SEWER LINES

