

OWNER/ DEVELOPER:

GRAND COMMUNITIES, LLC

3940 Olympic Blvd
Suite 100
Erlanger, Kentucky 41018
Phone: (404) 418-8942

24- HOUR CONTACT:

PROJECT:

**SPRINGBROOKE
UNIT II
PHASES 1-5**

LAND LOTS 975, 976, 1023 & 1024
19th DISTRICT, 2nd SECTION
CITY OF POWDER SPRINGS
COBB COUNTY, GEORGIA

SHEET TITLE:

**FLOODPLAIN
COMPENSATION
EXHIBIT**

DRAWING DATE: JULY 16, 2018

DRAWING SCALES

HORIZONTAL SCALE: 1"=100'

VERTICAL SCALE: N/A

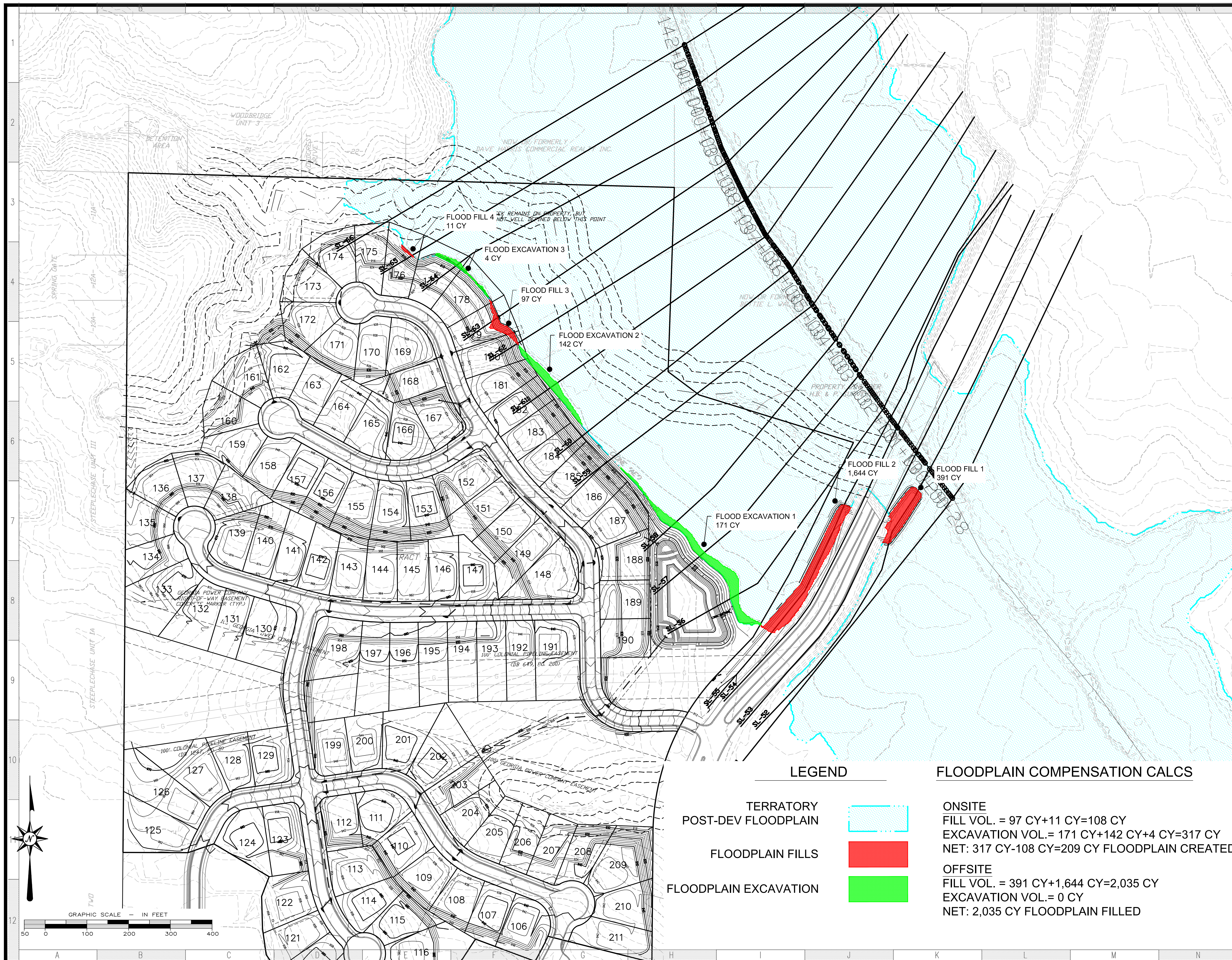


SHEET REVISIONS

NO.	DESCRIPTION	DATE
2		
3		
4		
5		

SHEET:

EXHIBIT



LEGEND

- TERRA
POST-DEV FLOODPLAIN █
- FLOODPLAIN FILLS █
- FLOODPLAIN EXCAVATION █

FLOODPLAIN COMPENSATION CALCS

ONSITE
 FILL VOL. = 97 CY+11 CY=108 CY
 EXCAVATION VOL.= 171 CY+142 CY+4 CY=317 CY
 NET: 317 CY-108 CY=209 CY FLOODPLAIN CREATED

OFFSITE
 FILL VOL. = 391 CY+1,644 CY=2,035 CY
 EXCAVATION VOL.= 0 CY
 NET: 2,035 CY FLOODPLAIN FILLED

