



706.202.6516
www.brookwoodtree.com

PO BOX 7774
ATLANTA, GA 30357

April 21, 2021

Mr. Paul Flippo
Flippo Civil Design
1197 Peachtree Street NE
Atlanta, GA 30309

RE: Brownsville Road Site Concept Plan

Dear Paul,

At your request and I walked the property at the corner of Brownsville Road and Oglesby Road in Powder Springs yesterday afternoon to review and assess trees in south east corner where wetlands and stormwater detention are proposed as well as around the perimeter of the site in relation to the schematic plan.

The current schematic plan shows the stormwater detention improvements would be in an area primarily dominated by small diameter sweetgum, red maples, tulip poplars, and some loblolly pines (Figures 1 and 2). These trees are of low value especially when compared with new hardwood plantings adapted to the conditions of the site. Selections should include:

- Overcup oak (*Quercus lyrata*)
- Nuttall oak (*Quercus nuttallii*)
- Willow oak (*Quercus phellos*)
- Bald cypress (*Taxodium distichum*)
- American elm (*Ulmus americana*)

Detention placement also appears to spare the majority of the large diameter trees on the site. This includes oaks, red maples and tulip poplars along Oglesby Road south of the wetland (Figure 3). Invasive species are present in the immediate frontage along Oglesby with multiflora rose, callery (Bradford) pear, Chinese privet, and bamboo (Figures 4 and 5) all present. Conceptual plans including a nature trail and well-suited native plantings in this area would improve long-term viability of the green space and better green infrastructure.

The perimeter of the site is predominantly small diameter planted Loblolly Pines. However there are a select number of large diameter water oaks in along Brownsville Road where they appear to coincide with old homesites (Figures 5 and 6). With further assessment of health and structure, some of these to be conserved during construction and featured as part of the final landscape.

Best regards,

Chris Hughes
Brookwood Tree Consulting, Inc.
ASCA Registered Consulting Arborist #493
ISA Certified Arborist SO-5374A



Figure 1 - Area of proposed stormwater detention includes small diameter, low value trees. Viewing from north to south.



Figure 2 - Area of proposed stormwater detention includes small diameter, low value trees. View from interior of wetland looking towards drive at east side of property.



Figure 3 - Large southern red oaks along Oglesby Road.



Figure 4 - Invasive species along Oglesby Road frontage.

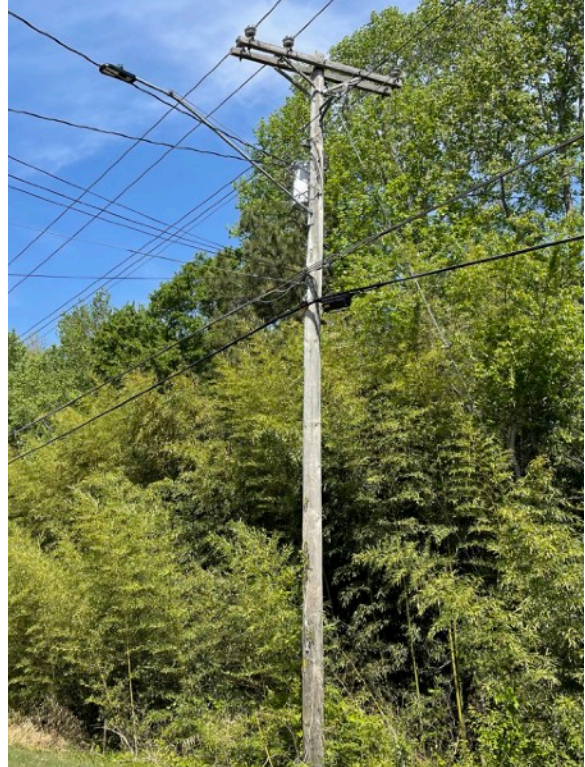


Figure 5 - Invasive species along Oglesby Road frontage.