



REVISIONS

NO.	DATE	DESCRIPTION
1		
2		
3		
4		
5		
6		
7		
8		
9		
10		
11		
12		
13		
14		
15		
16		
17		
18		
19		
20		
21		
22		
23		
24		
25		
26		
27		
28		
29		
30		
31		
32		
33		
34		
35		
36		
37		
38		
39		
40		
41		
42		
43		
44		
45		
46		
47		
48		
49		
50		
51		
52		
53		
54		
55		
56		
57		
58		
59		
60		
61		
62		
63		
64		
65		
66		
67		
68		
69		
70		
71		
72		
73		
74		
75		
76		
77		
78		
79		
80		
81		
82		
83		
84		
85		
86		
87		
88		
89		
90		
91		
92		
93		
94		
95		
96		
97		
98		
99		
100		

CLIENT: HILL ROAD DEVELOPMENT, LLC
 PROJECT: WEST OAK TRACE PHASE I
 CITY OF POWDER SPRING, COBB COUNTY, GEORGIA

CALL BEFORE YOU DIG



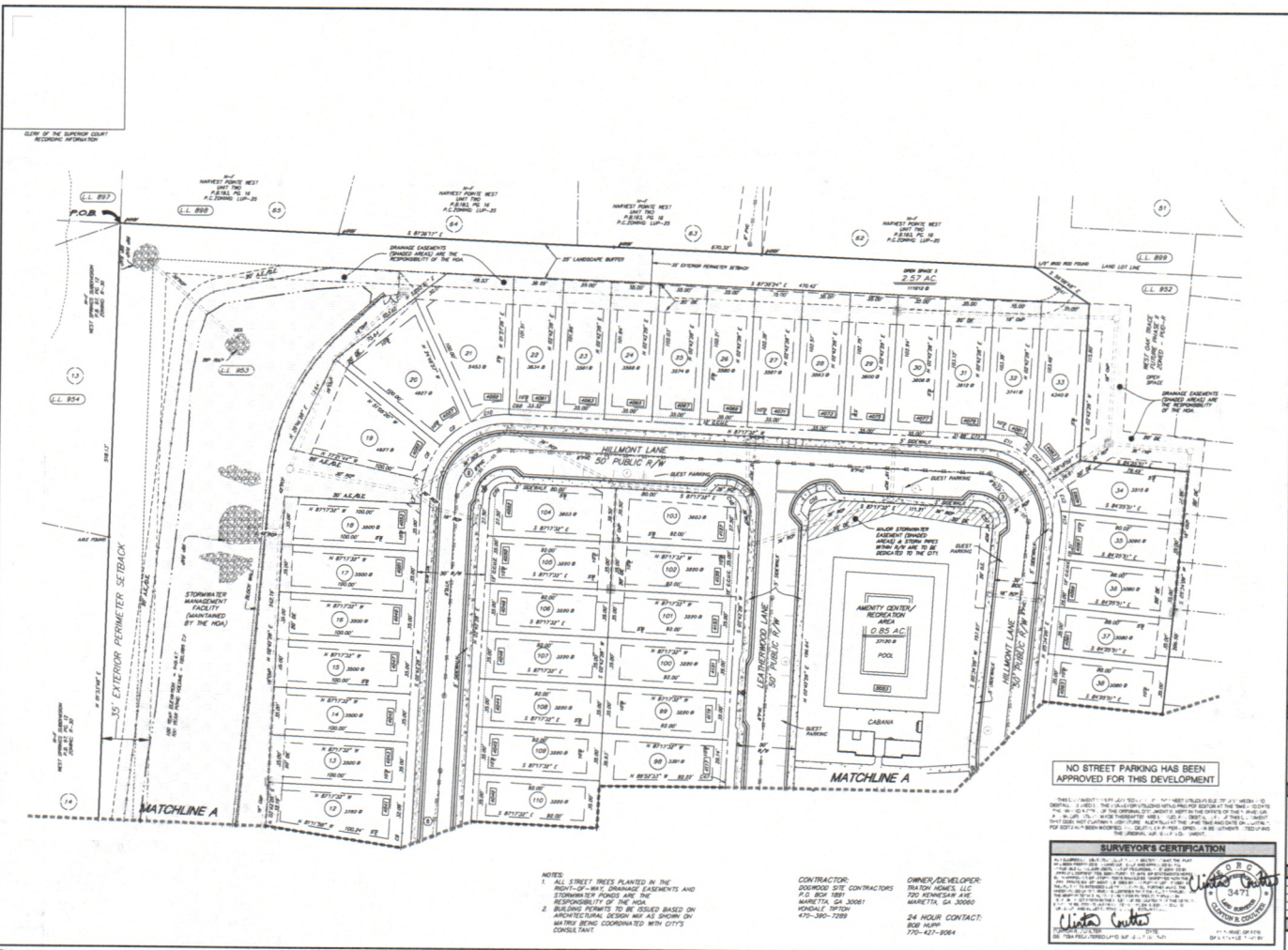
SCALE & NORTH ARROW



SURVEY INFO:

DATE	10/17/2017
PROJECT	111.1
FIELD NO.	15-04
DATE	10/17/2017
FINAL PLAT	

4 OF 7



NO STREET PARKING HAS BEEN APPROVED FOR THIS DEVELOPMENT

NOTES: 1. ALL STREET TREES PLANTED IN THE FRONT-YARD ARE THE RESPONSIBILITY OF THE HOA. 2. BUILDING PERMITS TO BE ISSUED BASED ON ARCHITECTURAL DESIGN AND AS SHOWN ON CONSULTANT'S COORDINATED WITH CITY'S CONSULTANT.

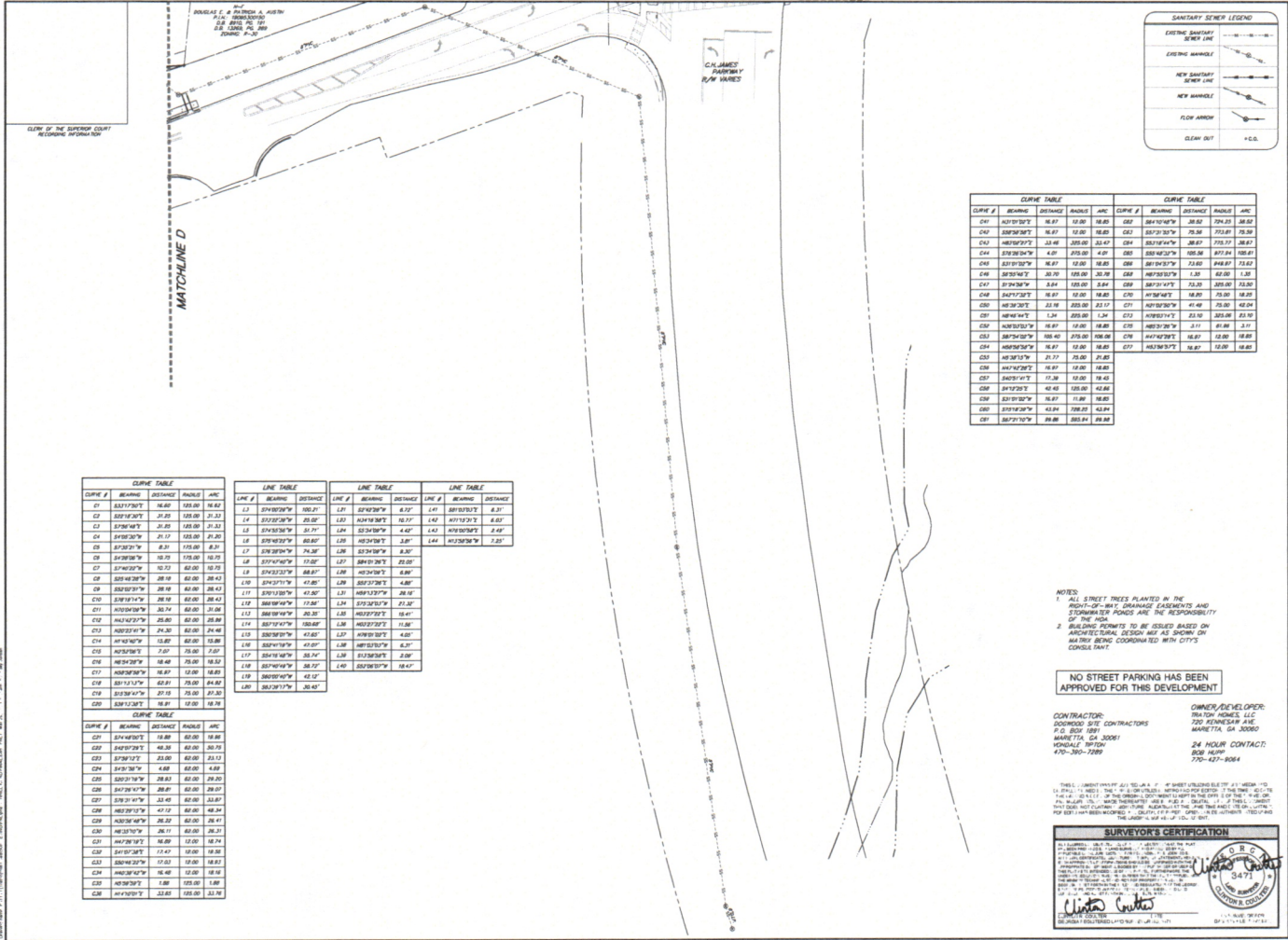
CONTRACTOR: PROGRESS SITE CONTRACTORS
 411 BOB HOFF
 MARETTA, GA 30067
 PHONE: 478-390-7289

OWNER/DEVELOPER: HILL ROAD DEVELOPMENT, LLC
 700 KENNESAW AVE
 MARETTA, GA 30067
 PHONE: 478-390-7289

SURVEYOR'S CERTIFICATION

I, the undersigned, being a duly licensed and qualified Surveyor in the State of Georgia, do hereby certify that the foregoing is a true and correct copy of the original survey as shown to me by the client, and that the same has been prepared in accordance with the laws and regulations of the State of Georgia.

Surveyor: *Walter G. Gentry*
 License No. 10178



SANITARY SEWER LEGEND

- EXISTING SANITARY SEWER LINE
- EXISTING MANHOLE
- NEW SANITARY SEWER LINE
- NEW MANHOLE
- FLOW ARROW
- CLEAR CUT

CURVE TABLE				CURVE TABLE			
CURVE #	BEARING	DISTANCE	ANGLE	CURVE #	BEARING	DISTANCE	ANGLE
C01	S81°17'00"W	18.00	180.00	C07	S81°17'00"W	18.00	180.00
C02	S81°17'00"W	18.00	180.00	C08	S81°17'00"W	18.00	180.00
C03	S81°17'00"W	18.00	180.00	C09	S81°17'00"W	18.00	180.00
C04	S81°17'00"W	18.00	180.00	C10	S81°17'00"W	18.00	180.00
C05	S81°17'00"W	18.00	180.00	C11	S81°17'00"W	18.00	180.00
C06	S81°17'00"W	18.00	180.00	C12	S81°17'00"W	18.00	180.00

CURVE TABLE				LINE TABLE				LINE TABLE				LINE TABLE			
CURVE #	BEARING	DISTANCE	ANGLE	LINE #	BEARING	DISTANCE	LINE #	BEARING	DISTANCE	LINE #	BEARING	DISTANCE	LINE #	BEARING	DISTANCE
C01	S81°17'00"W	18.00	180.00	L01	S81°17'00"W	18.00	L01	S81°17'00"W	18.00	L01	S81°17'00"W	18.00	L01	S81°17'00"W	18.00
C02	S81°17'00"W	18.00	180.00	L02	S81°17'00"W	18.00	L02	S81°17'00"W	18.00	L02	S81°17'00"W	18.00	L02	S81°17'00"W	18.00
C03	S81°17'00"W	18.00	180.00	L03	S81°17'00"W	18.00	L03	S81°17'00"W	18.00	L03	S81°17'00"W	18.00	L03	S81°17'00"W	18.00
C04	S81°17'00"W	18.00	180.00	L04	S81°17'00"W	18.00	L04	S81°17'00"W	18.00	L04	S81°17'00"W	18.00	L04	S81°17'00"W	18.00
C05	S81°17'00"W	18.00	180.00	L05	S81°17'00"W	18.00	L05	S81°17'00"W	18.00	L05	S81°17'00"W	18.00	L05	S81°17'00"W	18.00
C06	S81°17'00"W	18.00	180.00	L06	S81°17'00"W	18.00	L06	S81°17'00"W	18.00	L06	S81°17'00"W	18.00	L06	S81°17'00"W	18.00

NOTES:
 1. ALL STREET TREES PLANTED IN THE RIGHT-OF-WAY DRAINAGE EASEMENTS AND STORMWATER PONDS ARE THE RESPONSIBILITY OF THE HOME.
 2. BUILDING POINTS TO BE ISSUED BASED ON ARCHITECTURAL DESIGN MAY BE SHOWN ON THIS PLAN BEING COORDINATED WITH CITY'S CONSULTANT.

NO STREET PARKING HAS BEEN APPROVED FOR THIS DEVELOPMENT

CONTRACTOR:
 DOWNWOOD SITE CONTRACTORS
 P.O. BOX 1881
 MARIETTA, GA 30061
 (770) 360-7288

OWNER/DEVELOPER:
 HILL ROAD DEVELOPMENT, LLC
 370 BENSINGDALE ROAD
 MARIETTA, GA 30060

24 HOUR CONTACT:
 608 NUMBER
 770-427-9084

SURVEYOR'S CERTIFICATION

I, the undersigned, being a duly licensed and qualified Surveyor in the State of Georgia, do hereby certify that the foregoing is a true and correct copy of the original survey as shown to me by the contractor and that the same is in accordance with the laws and regulations of the State of Georgia.

Walter Carter
 Walter Carter
 Surveyor
 111 N. 11th Street
 Marietta, GA 30060

GASKINS LECRAW
 111 N. 11th Street
 Marietta, GA 30060
 (770) 427-9084

REVISIONS

NO.	DATE	DESCRIPTION
1		
2		
3		
4		
5		
6		
7		
8		
9		
10		

CLIENT:
 HILL ROAD DEVELOPMENT, LLC
 370 BENSINGDALE ROAD
 MARIETTA, GA 30060

PROJECT:
 WEST OAK TRACE PHASE I
 LAND LOTS 961, 197th DISTRICT, 2ND SECTION
 CITY OF POWDER SPRING, COBB COUNTY, GEORGIA

CALL BEFORE YOU DIG
 811
 Know what's below. Call before you dig.

SCALE & NORTH ARROW

7 OF 7