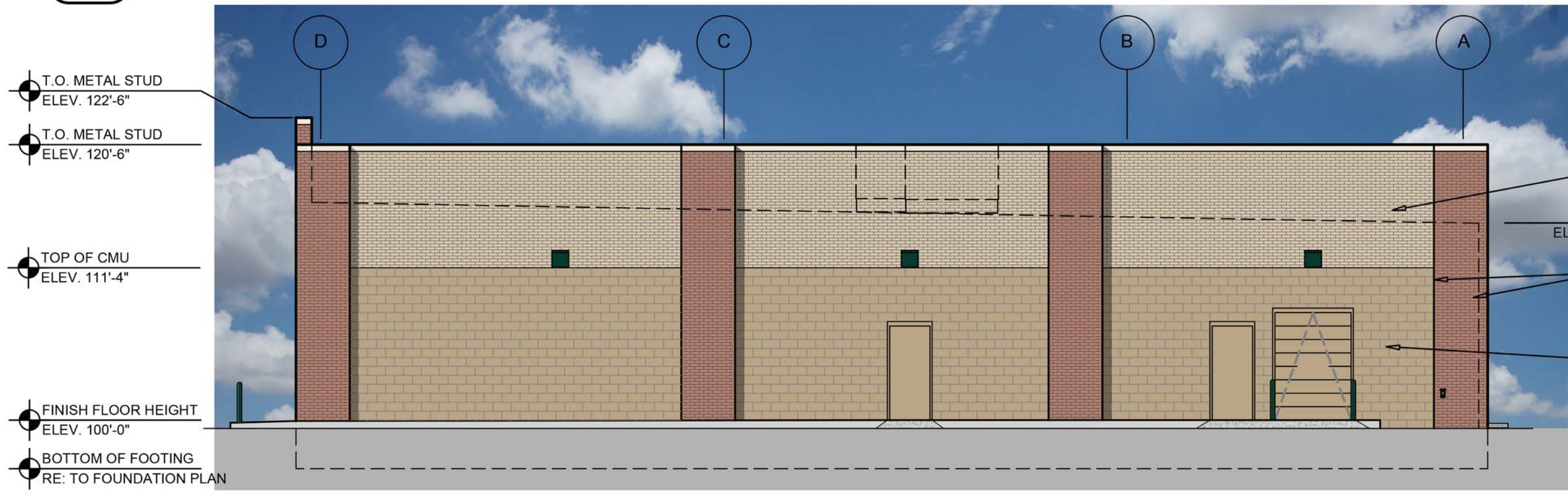




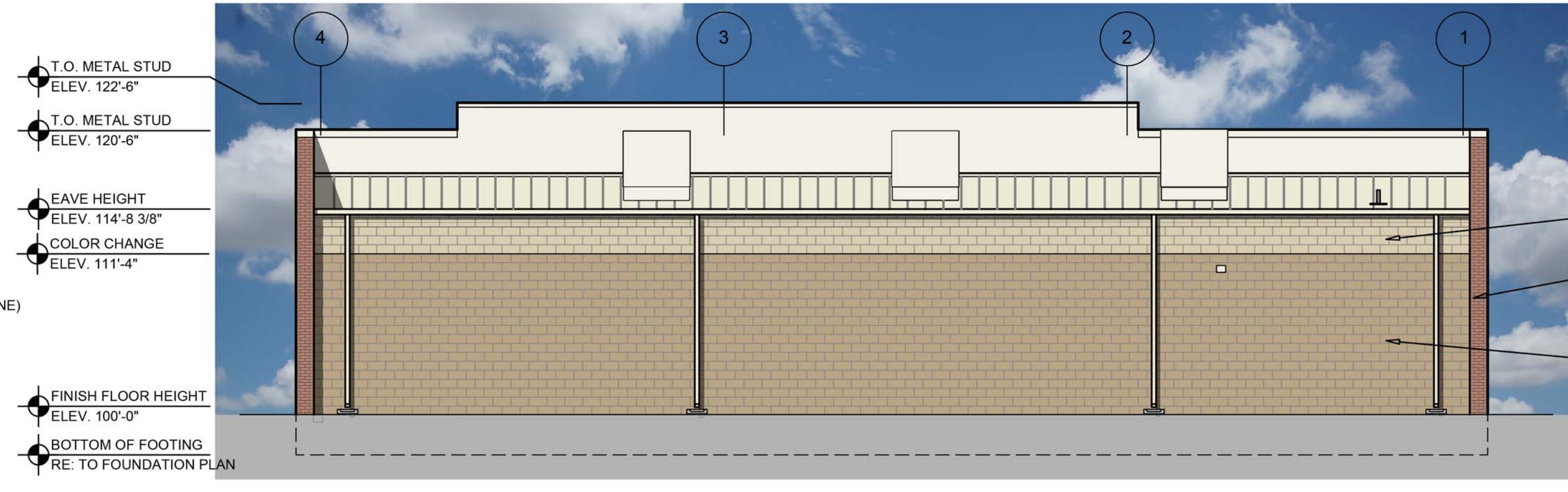
**1 FRONT EXTERIOR ELEVATION**  
**A2.1 SCALE: 1/8" = 1'-0"**

NOTE: ELEVATION %  
 55.2% - FACE BRICK (3-TONES)  
 23.1% - STOREFRONT GLASS  
 21.7% - CEMENT BOARD SIDING



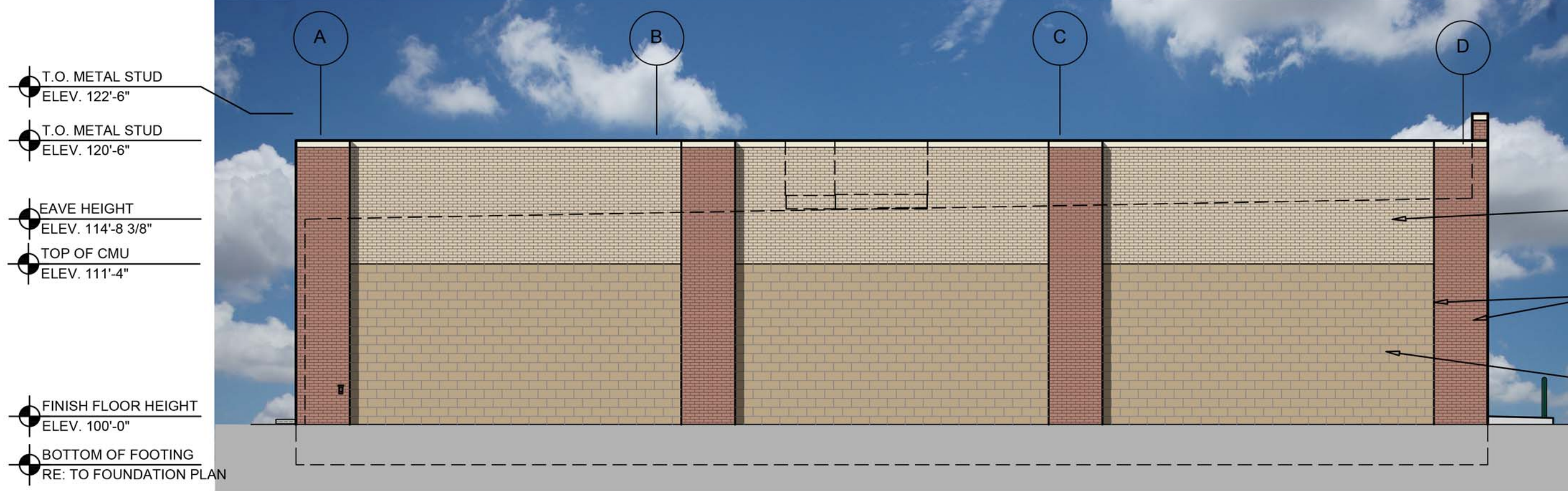
**2 RIGHT EXTERIOR ELEVATION**  
**A2.1 SCALE: 1/8" = 1'-0"**

NOTE: ELEVATION %  
 53% - FACE BRICK (2-TONE)  
 41.5% - SPLIT-FACE BLOCK  
 5.5% - DOOR OPENINGS



**3 REAR EXTERIOR ELEVATION**  
**A2.1 SCALE: 1/8" = 1'-0"**

NOTE: ELEVATION %  
 4% - FACE BRICK  
 96% - SPLIT-FACE BLOCK (2-TONE)



**4 LEFT EXTERIOR ELEVATION**  
**A2.1 SCALE: 1/8" = 1'-0"**

NOTE: ELEVATION %  
 53% - FACE BRICK (2-TONE)  
 47% - SPLIT-FACE BLOCK

**EXTERIOR FINISH SCHEDULE**

**CEMENT BOARD SIDING**  
**KEY NOTE NO. 1:**  
 MFG: TO BE DETERMINED  
 SERIES: TO BE DETERMINED  
 TEXTURE: TO BE DETERMINED  
 COLOR: TO MATCH DRYVIT #346 "PATCHWOOD"

**UNIT MASONRY (FACE BRICK)**  
**KEY NOTE NO. 2A:**  
 TYPE: CLAY MASONRY UNIT  
 MFG: ACME BRICK  
 SIZE: 2 1/4" X 3 5/8" X 7 5/8" (MODULAR)  
 COURSING: RUNNING BOND  
 COLOR: (ACCENT #2 COLOR) BLEND 30 DOVE GRAY VELOUR  
 MORTAR COLOR: NATURAL GRAY

**KEY NOTE NO. 2B:**  
 TYPE: CLAY MASONRY UNIT  
 MFG: ACME BRICK  
 SIZE: 2 1/4" X 3 5/8" X 7 5/8" (MODULAR)  
 COURSING: RUNNING BOND  
 COLOR: (ACCENT #1 COLOR) BLEND 600 OXFORD BROWN VELOUR  
 MORTAR COLOR: NATURAL GRAY

**KEY NOTE NO. 2C:**  
 TYPE: CLAY MASONRY UNIT  
 MFG: ACME BRICK  
 SIZE: 2 1/4" X 3 5/8" X 7 5/8" (MODULAR)  
 COURSING: RUNNING BOND  
 COLOR: (FIELD COLOR) T.B.D. (MATCH ADJACENT BUILDING)  
 MORTAR COLOR: RED BRICK

**UNIT MASONRY (SPLIT-FACED CONCRETE BLOCK VENEER)**  
**KEY NOTE NO. 2A:**  
 TYPE: CONCRETE MASONRY VENEER UNIT (CMU)  
 MFG: (REFER TO PROJECT MANUAL)  
 SIZE: 4"x8"x16" (NOM.)  
 TEXTURE: SMOOTH FACE  
 COURSING: RUNNING BOND  
 FINISH: FIELD PAINT (ACCENT COLOR)  
 COLOR: SHERWIN WILLIAMS "SOFTER TAN" SW6141 (SEMI-GLOSS)  
 COATS:  
 (1) COAT SW "PREPRITE" BLOCK FILLER B25W25 (NO LESS THAN 8 MILS) AND (2) COATS SW "CONFLEX XL" SMOOTH ELASTOMERIC A5-400 (NO LESS THAN 5.7 MILS EACH COAT) (1) COAT SW "SHER-CRYL HPA SEMI-GLOSS" (NO LESS THAN 4 MILS).

COATS (COLD WEATHER APPLICATIONS - CONDITIONS BELOW 35° F):  
 (1) COAT SW "LOXON BLOCK SURFACER" (NO LESS THAN 8 MILS) AND (2) COATS SW "ULTRACRETE" SOLVENT BORNE SMOOTH B46 (NO LESS THAN 8 MILS EACH COAT OR 16 MILS TOTAL)

**KEY NOTE NO. 2B:**  
 TYPE: CONCRETE MASONRY VENEER UNIT (CMU)  
 MFG: (REFER TO PROJECT MANUAL)  
 SIZE: 4"x8"x16" (NOM.)  
 TEXTURE: SPLIT FACE  
 COURSING: RUNNING BOND  
 FINISH: FIELD PAINT (FIELD COLOR)  
 COLOR: SHERWIN WILLIAMS "LATTE" SW6108 (SEMI-GLOSS)  
 COATS:  
 (1) COAT SW "PREPRITE" BLOCK FILLER B25W25 (NO LESS THAN 8 MILS) AND (2) COATS SW "CONFLEX XL" SMOOTH ELASTOMERIC A5-400 (NO LESS THAN 5.7 MILS EACH COAT) (1) COAT SW "SHER-CRYL HPA SEMI-GLOSS" (NO LESS THAN 4 MILS).

COATS (COLD WEATHER APPLICATIONS - CONDITIONS BELOW 35° F):  
 (1) COAT SW "LOXON BLOCK SURFACER" (NO LESS THAN 8 MILS) AND (2) COATS SW "ULTRACRETE" SOLVENT BORNE SMOOTH B46 (NO LESS THAN 8 MILS EACH COAT OR 16 MILS TOTAL)

**FLASHING AND SHEET METAL**  
**KEY NOTE NO. 3:**  
 TYPE: STANDING SEAM ROOFING SYSTEM  
 MFG: (REFER TO PRE-ENGINEERED METAL BUILDING SHOP DRAWINGS)  
 COLOR: GALVALUME

**KEY NOTE NO. 4:**  
 TYPE: CAP FLASHING AT MASONRY  
 MFG: (REFER TO PRE-ENGINEERED METAL BUILDING SHOP DRAWINGS)  
 FINISH: PREFINISHED  
 COLOR: EQUAL TO BUTLER BUILDING "COOL BIRCH WHITE"

**KEY NOTE NO. 5:**  
 TYPE: CAP FLASHING AT EXTERIOR INSULATION FINISH SYSTEM (EIFS)  
 MFG: (REFER TO PRE-ENGINEERED METAL BUILDING SHOP DRAWINGS)  
 FINISH: FACTORY PRIMED AND FIELD PAINT  
 COLOR: SHERWIN WILLIAMS "POSITIVE RED" SW6871 (SHER-CRYL) GLOSS WITH SHERWIN WILLIAMS THREE COMPONENT (B65T105 / B65V105 / B65C105) CLEAR URETHANE

**KEY NOTE NO. 6:**  
 TYPE: GUTTER AND DOWNSPOUTS  
 MFG: (REFER TO PRE-ENGINEERED METAL BUILDING SHOP DRAWINGS)  
 FINISH: PREFINISHED  
 COLOR: EQUAL TO BUTLER BUILDING "COOL BIRCH WHITE"

**DOORS AND WINDOWS**  
**KEY NOTE NO. 12:**  
 TYPE: STEEL DOORS AND FRAMES (DOORS NO. 2 AND 7)  
 MFG: (OWNER FURNISHED / CONTRACTOR INSTALLED)  
 FINISH: FACTORY PRIMED AND FIELD PAINTED  
 COLOR: SHERWIN WILLIAMS (MATCH ADJACENT MASONRY COLOR) (SEMI-GLOSS)

**KEY NOTE NO. 12:**  
 TYPE: STEEL DOORS AND FRAMES (DOORS NO. 3)  
 MFG: (REFER PROJECT MANUAL)  
 FINISH: FACTORY PRIMED AND FIELD PAINTED  
 COLOR: SHERWIN WILLIAMS (MATCH ADJACENT MASONRY COLOR) (SEMI-GLOSS)

**KEY NOTE NO. 13:**  
 TYPE: (REFER TO WINDOW SCHEDULE)  
 MFG: EFCO, KAWNEER, OR OLD CASTLE (VISTA WALL). (NO SUBSTITUTES)  
 COLOR: EFCO "IVY", KAWNEER "DARK IVY", VISTA WALL "INTERSTATE GREEN"

**PAINTING**  
**KEY NOTE NO. 15:**  
 TYPE: STEEL BOLLARDS (REFER TO CIVIL DRAWINGS)  
 FINISH: FIELD PRIMED AND PAINTED  
 COLOR: SHERWIN WILLIAMS "HUNT CLUB" SW6468 (SEMI-GLOSS)

**GENERAL NOTES**

- (A) REFER TO PROJECT MANUAL FOR ADDITIONAL REQUIREMENTS.
- (B) REFER TO CIVIL DRAWINGS FOR ADDITIONAL REQUIREMENTS.
- (C) REFER TO PLUMBING, MECHANICAL, AND ELECTRICAL DRAWINGS FOR SYSTEM TYPES AND ADDITIONAL REQUIREMENTS.
- (D) REFER TO EXTERIOR FINISH SCHEDULE FOR MATERIAL TYPES.
- (E) REFER TO PRE-ENGINEERED METAL BUILDING SHOP DRAWINGS FOR ADDITIONAL REQUIREMENTS.
- (F) REFER TO SCOPE OF WORK SCHEDULE FOR ADDITIONAL REQUIREMENTS.

**KEY NOTES**

- (1) EXTERIOR INSULATION AND FINISH SYSTEM (EIFS).
- (2A) CLAY MASONRY UNIT EXTERIOR WALL CONSTRUCTION (ACCENT COLOR), REFER TO PLANS, SECTIONS, AND DETAILS FOR ADDITIONAL REQUIREMENTS.
- (2B) CLAY MASONRY UNIT EXTERIOR WALL CONSTRUCTION (FIELD COLOR), REFER TO PLANS, SECTIONS, AND DETAILS FOR ADDITIONAL REQUIREMENTS.
- (3) PRE-ENGINEERED METAL BUILDING SHEET METAL ROOFING SYSTEM.
- (4) PRE-ENGINEERED METAL BUILDING SHEET METAL FLASHING (AT MASONRY)
- (5) PRE-ENGINEERED METAL BUILDING SHEET METAL FLASHING (AT EIFS)
- (6) PRE-ENGINEERED METAL BUILDING SHEET METAL GUTTER AND DOWNSPOUT SYSTEM.
- (7) (NOT USED).
- (8) LINE OF ROOF BEYOND WITH 1/4":12" SLOPE MINIMUM.
- (9) SURFACE MOUNTED SIGN OWNER FURNISHED AND INSTALLED. PROVIDE BACKING FOR MOUNTING AND ROUGH-IN ELECTRICAL COORDINATE REQUIREMENTS WITH OWNER. REFER TO SHEET S92.1.
- (10) BUILDING ADDRESS NUMBERS IN 6" HIGH HELVETICA WHITE VINYL ADHERED TO EXTERIOR FACE OF GLAZING.
- (11) (NOT USED).
- (12) EXTERIOR DOOR AND FRAME SYSTEM. REFER TO FLOOR PLAN AND DOOR SCHEDULE FOR TYPES.
- (13) EXTERIOR WINDOW SYSTEM. REFER TO FLOOR PLAN AND WINDOW SCHEDULE FOR TYPES.
- (14) APPROXIMATE LINE OF FOUNDATION, REFER TO STRUCTURAL DRAWINGS.
- (15) STEEL BOLLARDS, REFER TO CIVIL AND STRUCTURAL DRAWINGS.
- (16) HOSE BIB, REFER TO PLUMBING DRAWINGS.
- (17) LIGHT FIXTURE, REFER TO ELECTRICAL DRAWINGS.
- (18) (NOT USED).
- (19) MECHANICAL ROOF TOP UNIT, REFER TO MECHANICAL DRAWINGS.
- (20) MECHANICAL WALL PENETRATIONS, REFER TO MECHANICAL DRAWINGS. PROVIDE FRAMING, FLASHING, AND SEALANT AS REQUIRED. INSTALL RESTROOM EXHAUST FANS 12" MINIMUM ABOVE INTERIOR CEILING FRAMING.
- (21) PLUMBING ROOF VENT, REFER TO PLUMBING DRAWINGS AND DETAIL 11/A4.2.
- (22) CONCRETE SPLASH BLOCK INSTALL AT EACH DOWNSPOUT.
- (23) MASONRY CONTROL JOINT. PROVIDE SEALANT OVER 1/2" DIAMETER FOAM BACKER ROD. COLOR TO MATCH ADJACENT MASONRY.
- (24) RUSTICATION JOINT, REFER TO DETAIL 6/A3.2.

INDIVIDUAL ARCHITECTURAL REGISTRATION NO.: 010441



SHEETS BEARING THIS SEAL ARE AUTHENTICATED, RESPONSIBILITY FOR ALL OTHER PLANS, SPECIFICATIONS OR INSTRUMENTS ARE DISCLAIMED.

**O'Reilly AUTO PARTS**  
 CORPORATE OFFICES  
 233 SOUTH PATTERSON  
 SPRINGFIELD, MISSOURI 65802  
 (417) 862-2674 TELEPHONE  
 (417) 862-2674 TELEPHONE

PROJECT:  
**NEW O'REILLY AUTO PARTS STORE**  
**4440 BROWNSVILLE ROAD**  
**POWDER SPRINGS, GEORGIA**  
**EXTERIOR ELEVATIONS**

**Buddy Webb, NCARB, AIA**  
**Architect - Consultant**  
 3057 EAST CAIRO  
 SPRINGFIELD, MISSOURI 65802  
 (417) 877-1385 TELEPHONE  
 (417) 877-9736 FAX

DRAWN BY: **AJP** CHECKED BY: **RV**  
 DATE: **11/14/19**  
 REVISION:  
 PROJECT NUMBER: **PW2**  
 SHEET NUMBER

**A2.1**

DESIGN, DRAWINGS AND SPECIFICATIONS ARE INSTRUMENTS OF SERVICE AND ARE THE PROPERTY OF THE DESIGN PROFESSIONAL. REPRODUCTION PROHIBITED WITHOUT THE EXPRESSED WRITTEN CONSENT OF THE DESIGN PROFESSIONAL. © COPYRIGHT 2019