

**CASE NUMBER: AL 24-001**

**APPLICANT:** Cellar Bold and Distillery, Morounfolu “Tona” Awotona.

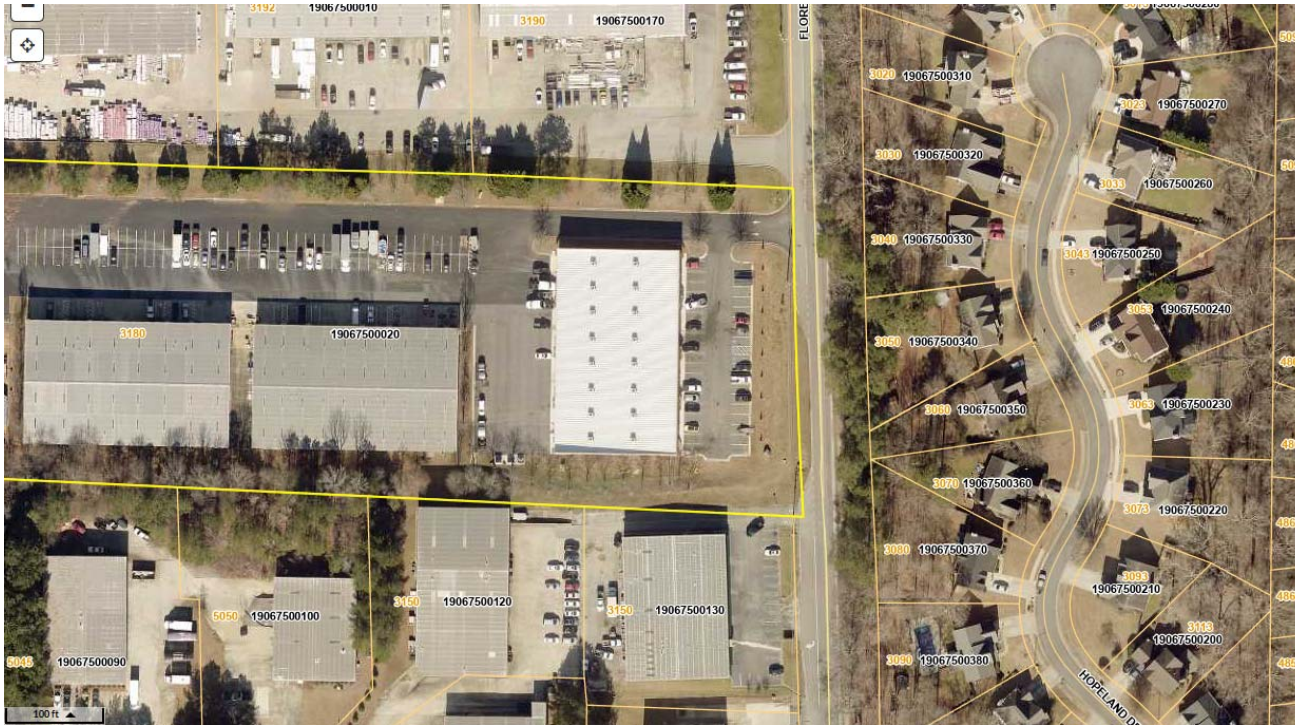
**ALCOHOL LICENSE:** Distillery and Farm Winery license.

**LOCATION:** 3180 Florence Road SW, Ste 105

**ZONING:** LI

**ACRES:** 6 ac

**PIN:** 19067500020



City of Powder Springs Definition and parts	Response
<p>Farm winery means a winery which makes at least forty (40) percent of its annual production from agricultural produce grown in the state where the winery is located and:</p>	<p>Our winery will make at least 40% of our production will be from agricultural produce grown in Georgia.</p>
<p>(A) Is located on premises, a substantial portion of which is used for agricultural purposes, including the cultivation of grapes, berries, or fruits to be utilized in the manufacture or production of wine by the winery; or</p>	<p>A substantial portion of our premises will be used for agricultural purposes(in this case, harvesting, storing and producing honeybee products-Honey, Beeswax</p>
<p>(B) Is owned and operated by persons who are engaged in the production of a substantial portion of the agricultural produce used in its annual production.</p>	<p>Yes</p>
<p>(C) For purposes of this definition, the commissioner of revenue shall determine what is a substantial portion of such winery premises or agricultural produce.</p>	<p>TBD, although agricultural produce is somewhat contradictory, because agricultural produce is defined elsewhere.</p>

### *State of Georgia Definition*

“Agricultural operations” is used synonymously with the term “agricultural purposes” and means the following activities:

- i. Raising, growing, harvesting, or storing of crops, including, but not limited to, soil preparation and crop production services such as plowing, fertilizing, seed bed preparation, planting, cultivating, and crop protecting services;
- ii. Feeding, breeding, or managing livestock, equine, or poultry;
- iii. Producing or storing feed for use in the production of livestock, including, but not limited to, cattle, calves, swine, hogs, goats, sheep, equine, and rabbits, or for use in the production of poultry, including, but not limited to, chickens, hens, ratites, and turkeys;
- iv. Producing plants, trees, fowl, equine, or other animals;
- v. Producing aquacultural, horticultural, viticultural, silvicultural, grass sod, dairy, livestock, poultry, egg, and apiarian products;
- vi. Processing poultry;
- vii. Post-harvest services on crops with the intent of preparing them for market or further processing, including but not limited to crop cleaning, drying, shelling, fumigating, curing, sorting, grading, packing, ginning, canning, pickling, and cooling;
- viii. Slaughtering poultry and other animals; and
- ix. Manufacturing dairy products.

*Additional City of Powder Springs*

**Agricultural facility:** Includes, but is not limited to, any land, building, structure, pond, impoundment, appurtenance, machinery, or equipment which is used for the commercial production or processing of crops, livestock, animals, poultry, honeybees, honeybee products, livestock products, poultry products, timber, forest products, or products which are used in commercial aquaculture. Such term does not include any farm labor camp or facilities for migrant farm workers. (Georgia Code Section 41-1-7)

**Agricultural operation:** Those practices involving the establishment, cultivation, or harvesting of products of the field or orchard; the preparation and planting of pasture land; farm ponds; dairy operations; livestock and poultry management practices; the construction of farm buildings; The plowing, tilling, or preparation of soil at an *agricultural* facility; The planting, growing, fertilizing, harvesting, or otherwise maintaining of crops; The application of pesticides, herbicides, or other chemicals, compounds, or substances to crops, weeds, or soil in connection with the production of crops, timber, livestock, animals, or poultry; The breeding, hatching, raising, producing, feeding, keeping of livestock, hogs, equines, chickens, turkeys, poultry or other fowl normally raised for food, mules, cattle, sheep, goats, dogs, rabbits, or similar farm animals for commercial purposes, but not the regular slaughtering, or processing of such animals; the production and keeping of honeybees, the production of honeybee products; the production, of eggs or egg products; the rotation of crops, including without limitation timber production; aquaculture; and the application of existing, changed, or new technology, practices, processes, or procedures to any *agricultural* operation (based on Georgia Code Sections 1-3-3 and 41-1-7). *Agricultural* operation does not include a roadside stand or *agricultural* processing.

**Zoning Definition-Farm winery:** A use that makes wines, *meads* or similar beverages on site. The use may further be described in O.C.G.A. 3-6-21.1