

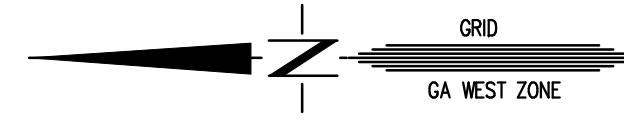
CURVE TABLE			
CURVE	RADIUS	LENGTH	CHORD BEARING
C1	64.70'	9.35'	85.56° N26°42'37"E
C2	44.25'	34.77'	140°25'31"W
C3	199.82'	30.80'	16°10'43"W

LINE TABLE		
LINE	DISTANCE	DIRECTION
L1	10.03'	N22°37'35"W
L2	20.20'	N72°09'00"E
L3	7.57'	N14°16'21"W
L4	13.68'	N04°29'21"E
L5	7.77'	N54°42'30"W
L6	24.43'	N17°44'38"W
L7	20.65'	N47°48'54"W

FLOOD INFORMATION

THIS PROPERTY IS LOCATED WITHIN A FEMA 100 YEAR SFHA ZONE AE ACCORDING TO COBB COUNTY F.I.R.M. PANEL 0089 G, COMMUNITY NO. 130056, MAP DATED, DEC. 16, 2008

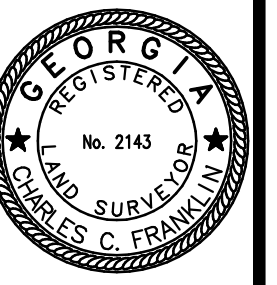
TRAVERSE CLOSURE - OPEN TRAVERSE
 ANGULAR ERROR - N/A
 ADJUSTMENT - NO ADJUSTMENT
 EQUIPMENT - TOPCON 303 TOTAL STATION
 EASEMENT CLOSURE - 1:592,772
 ALL MATTERS OF TITLE EXCEPTED.



N/F
 MANUEL BUILDERS, INC.
 ZONED U

L.L.
 674

L.L.
 733



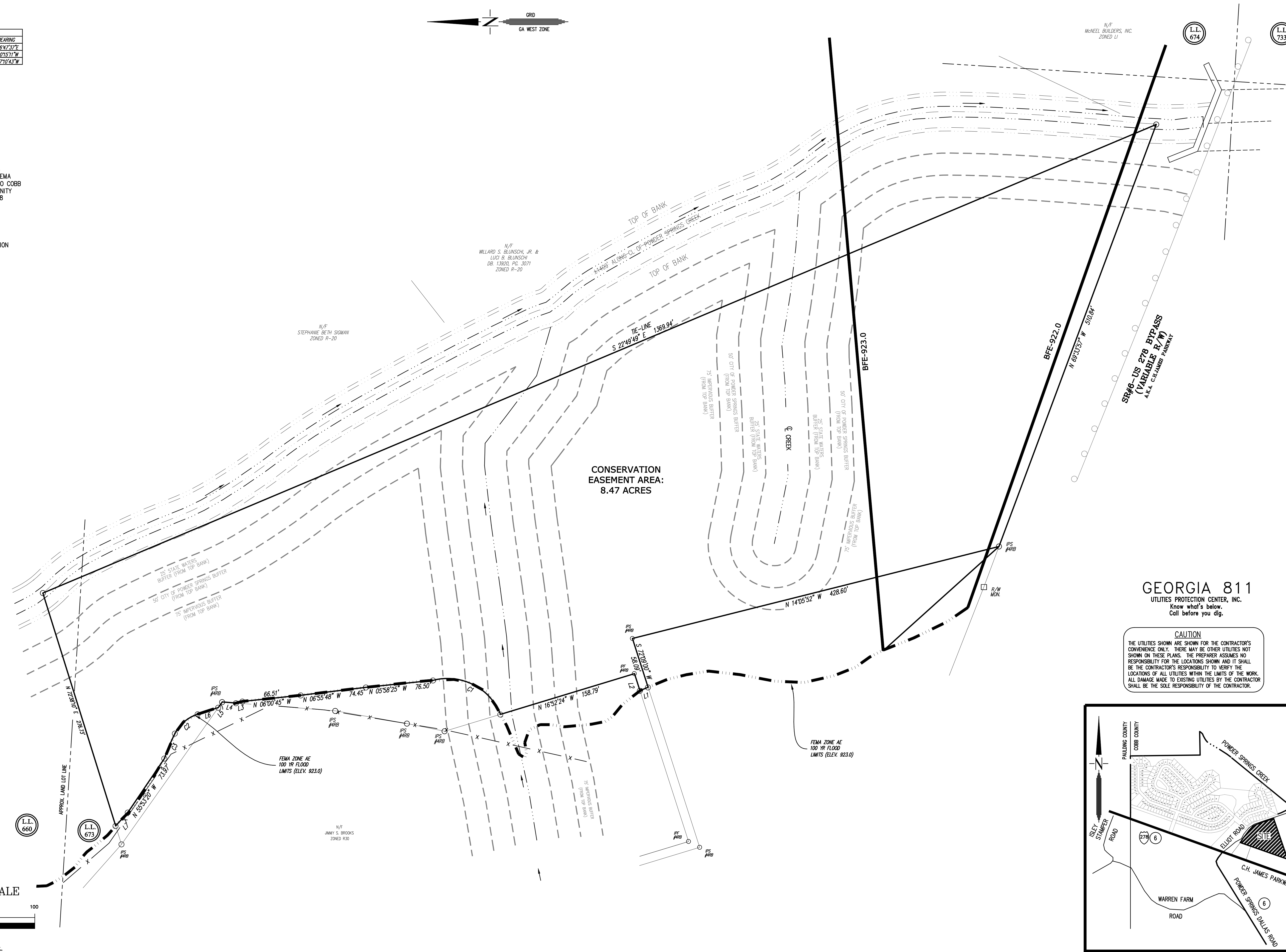
centerline
 Surveying and Land Planning, Inc.
 1301 SHILOH ROAD, SUITE 1410, KENNESAW, GA 30144
 PHONE: (770) 424-0028 FAX: (770) 424-2399

CONSERVATION EASEMENT FOR:
VILLAGE AT WEST COBB
 (P.K.A. SILVERBROOK PHASE V)
 A.K.A. C.H. JAMES PARKWAY
 LAND LOT 660, 661, 672 & 673, 19TH DISTRICT, 2nd SECTION
 CITY OF POWDER SPRINGS
 COBB COUNTY, GEORGIA

NO.	DATE	REVISION DESCRIPTION	BY

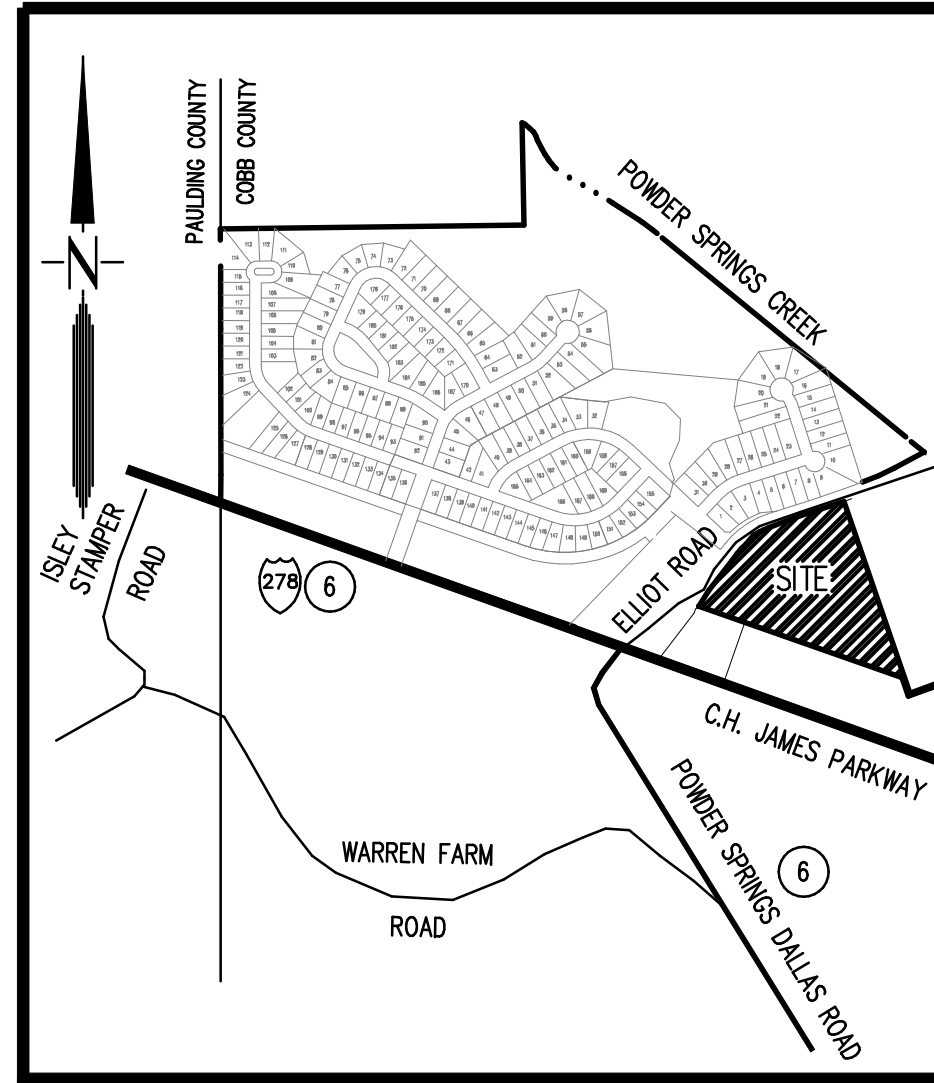
DRAWN BY: JWB
 CHECKED BY: MSF
 DATE: 7-30-18
 SCALE: 1" = 50'
 PROJECT NO.: 616029-CONS.

SHEET No.
 1 of 1



GEORGIA 811
 UTILITIES PROTECTION CENTER, INC.
 Know what's below.
 Call before you dig.

CAUTION
 THE UTILITIES SHOWN ARE SHOWN FOR THE CONTRACTOR'S CONVENIENCE ONLY. THERE MAY BE OTHER UTILITIES NOT SHOWN ON THESE PLANS. THE PREPARER ASSUMES NO RESPONSIBILITY FOR THE LOCATIONS SHOWN AND IT SHALL BE THE CONTRACTOR'S RESPONSIBILITY TO VERIFY THE LOCATIONS OF ALL UTILITIES WITHIN THE LIMITS OF THE WORK. ALL DAMAGE MADE TO EXISTING UTILITIES BY THE CONTRACTOR SHALL BE THE SOLE RESPONSIBILITY OF THE CONTRACTOR.



LOCATION MAP - N.T.S.

