

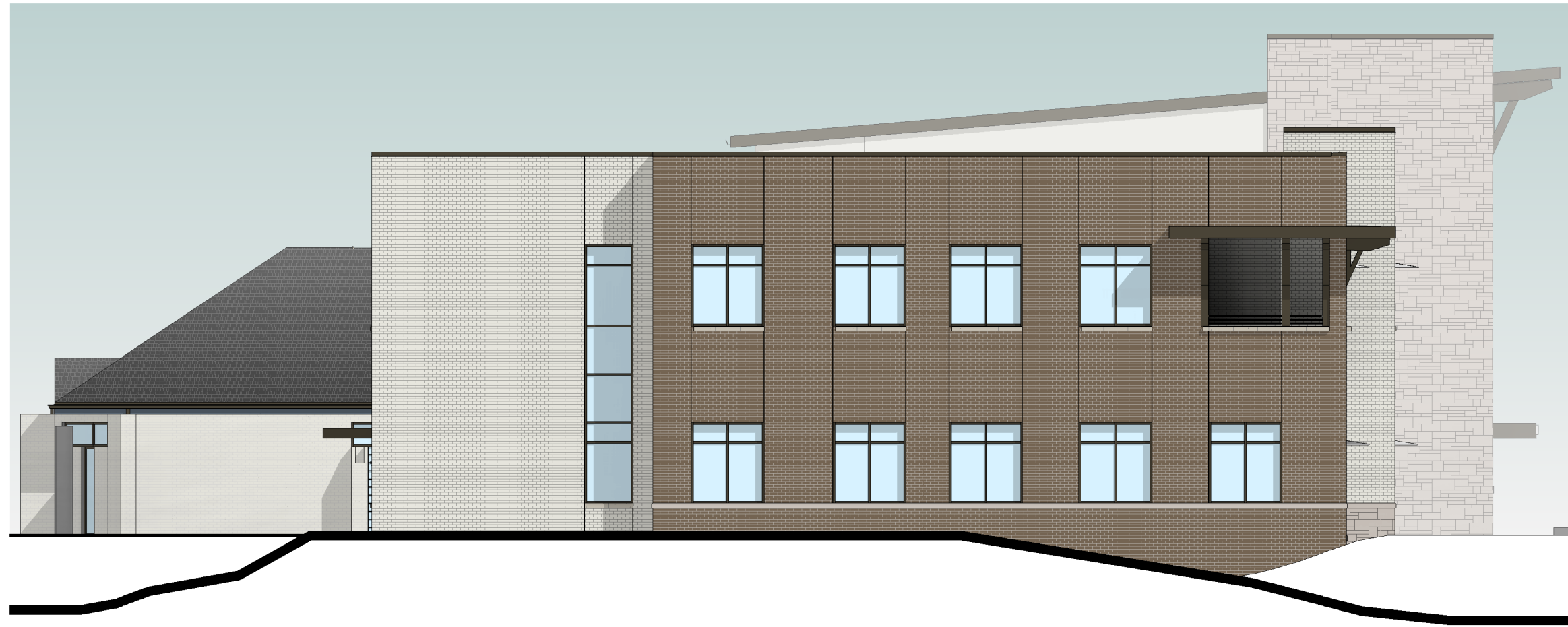


THE CITY OF POWDER SPRINGS

4483 JACKSON WAY EXTENTION
POWDER SPRINGS, GA 30127

RENDERING

CROFT



EXTERIOR ELEVATION - WEST
3/32" = 1'-0"



EXTERIOR ELEVATION - SOUTH
3/32" = 1'-0"



EXTERIOR ELEVATION - EAST
3/32" = 1'-0"



EXTERIOR ELEVATION - NORTH
3/32" = 1'-0"