

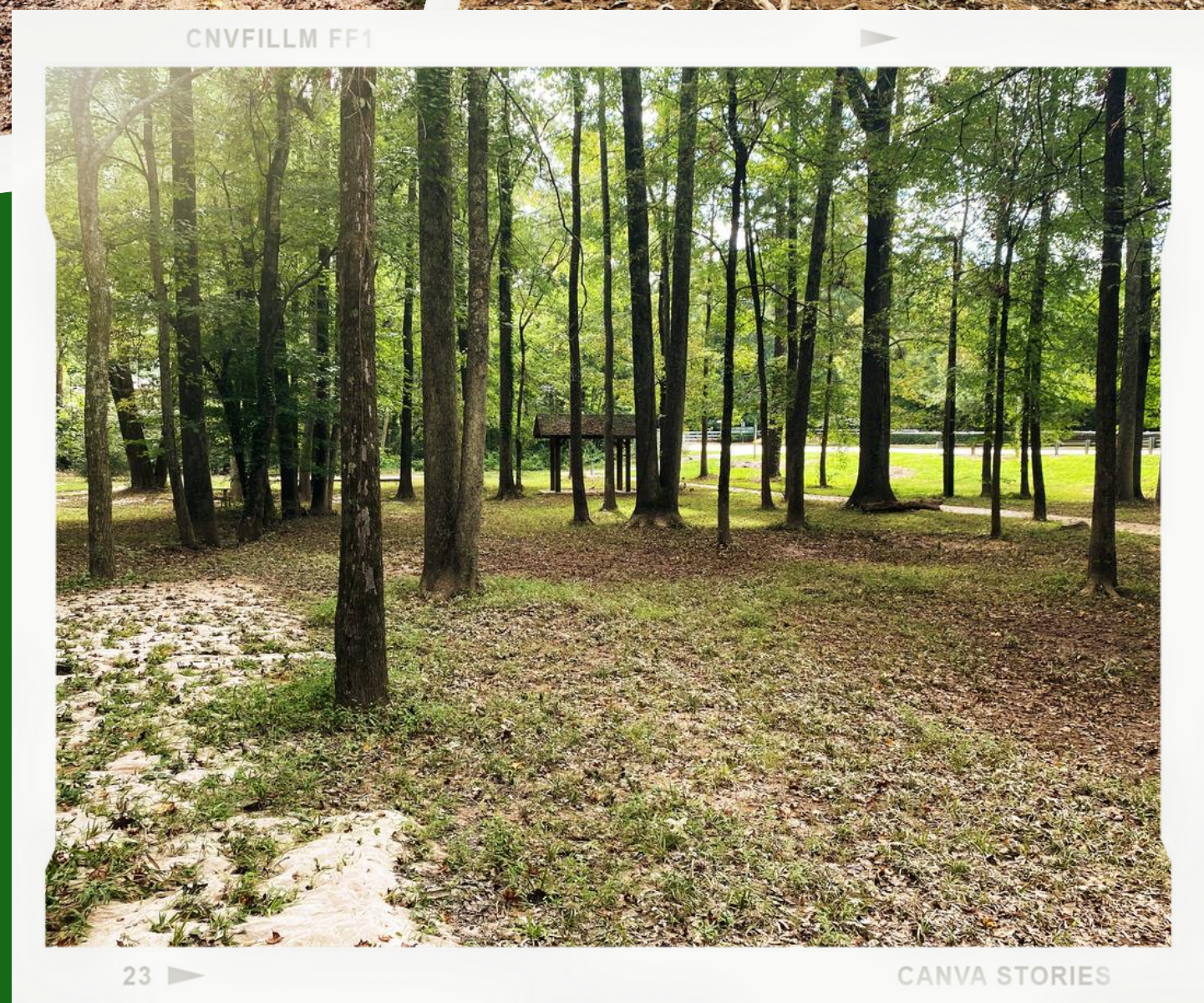


SPARROW'S NEST PLAY INC.

NATURE PLAY, CREATION CARE, JUST LIVING

SPARROWSNESTPLAY.ORG

a nature play care program,
seeking to nurture children
through peace teaching,
creation care, conflict
resolution, and community



–Did you know?

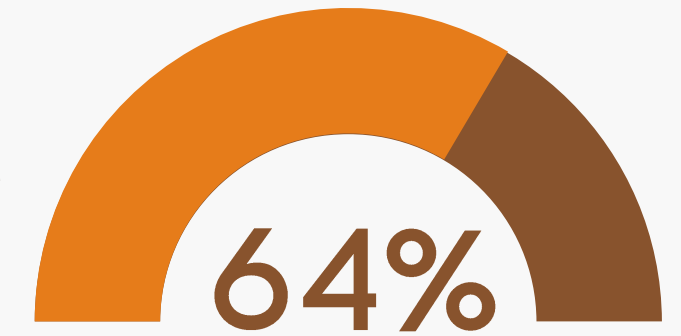
The way children play has changed drastically in the past 30 years...





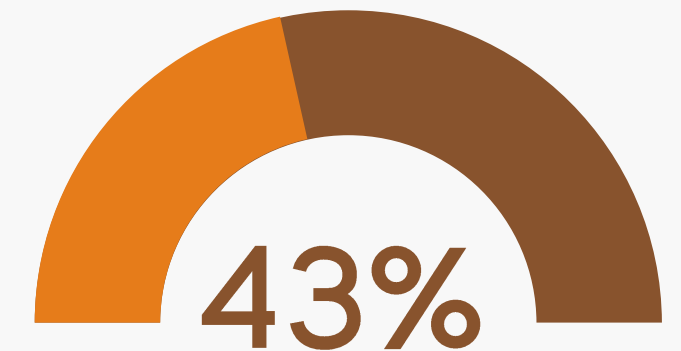
Outside play...

64% of children play outside less than once a week



Free play...

43% of adults think children should not play alone outside until age 14



Range of play...

a child's outdoor play range has shrunk 90% since the 1970s



After School Adventures

- **Monday - Friday; 2:30pm -6:00pm**
- **Independently Funded; \$7/day**
(scholarships available)
- **Optimally meet at bus drop off (Rooted Trading Co. as homebase)**
- **January - May 2022**
- **6 students**
- **Re-evaluation period May 2022**
- **Potential for Summer & Fall programming 2022**

Gathering Circle & Snack

Group Game

Mindfulness Practice

Seasonal Group Project

Free Nature Play

Discovery Time

Closing Circle

BENEFITS FOR OUR CITY

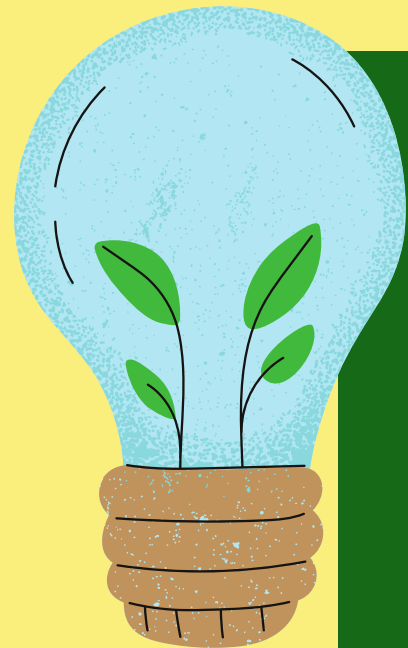


ESTABLISHES A LOVE OF COMMUNITY LOVING ONE'S NEIGHBORHOOD

A place is made up of the people who inhabit it. As children experience learning in the community, they get to know its members and build relationships.



**POWDER
SPRINGS**



INSPIRES STEWARDSHIP

WE ARE ALL CARETAKERS OF ONE ANOTHER

Healthy relationships with land and neighbors lead children and their families to care for the small patches of nature they experience in their place. Studies show that more than any other influence, this inspires stewardship.



RENEWS CIVIC ENGAGEMENT

TO KNOW A PLACE IS TO LOVE IT

When people feel attachment to a place, they invest their time, energy and lives in that place.

BENEFITS FOR FAMILIES & CHILDREN



IMPROVES OUTCOMES HIGHER RATES OF ACHIEVEMENT

When students feel connected to a place and a part of the greater community, attendance and participation rates go up. Students gain confidence from the relationships they develop with community partners and their achievement rises.

BENEFITS FOR CHILDREN

- **enhances Decision Making & Risk Taking Skills**
- **develops Perseverance & Resilience**
- **fosters Independence**
- **builds Self-Confidence**
- **learn Teamwork & Cooperation**
- **develop Leadership Skills**
- **develop Adapability**
- **increases Gross & Small Motor function**
- **increases Balance & Agility**

JUSTICE
RELATIONSHIPS
"LEAVE NO TRACE"



City Support

- We do request the use of restrooms in the Concession Stand for use of our students between 2:30pm and 6:00pm.
- As part of a nature play curriculum, we do request that our students be able to build temporary natural shelters out of fallen materials in the forest, use natural materials to make art, as well as play in the stream, use fallen clay from banks, and dig in the sand. We would NOT engage in activities that cause erosion or harm plants and animals. A central purpose of the program is to teach/model respect for and protection of the land and its inhabitants.

We are a 501-C3 non-profit corporation.

We are insured and include **Participant Liability Waivers, Safety Plan** and **Emergency Protocols** as part of our orientation and registration process.

As partners, we volunteer to contribute to trail maintenance, with a view toward maintaining the integrity of the Passive Area as it now stands.

Sparrow's Nest Play community is open to families and children of all faiths, races, abilities, and backgrounds. We cherish opportunities to embrace diversity among one another, teaching collaboration justice and peace.

Contact Us

Vangie Rodenbeck
Director

director@sparrowsnestplay.org

www.sparrowsnestplay.org

