

TOTAL AREA =6.861 ACRES
298,859 SF.

Parcel # 19091100040



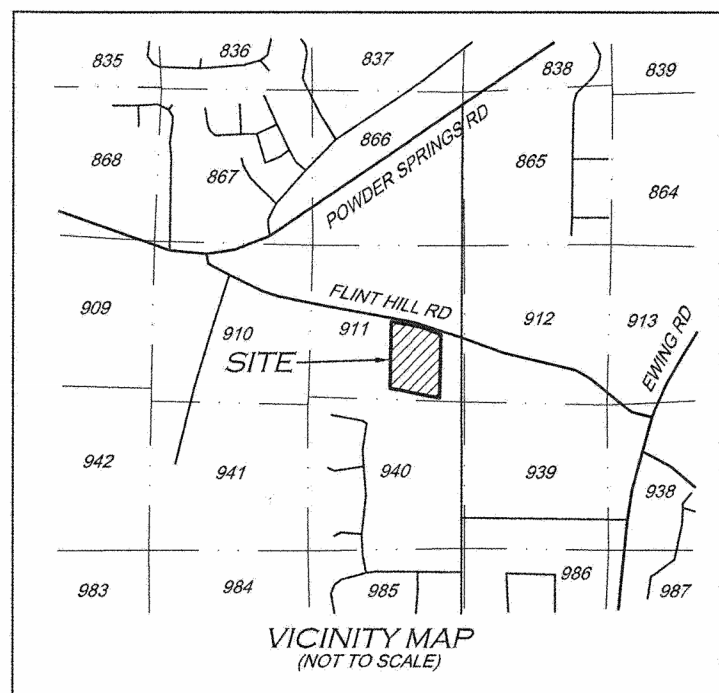
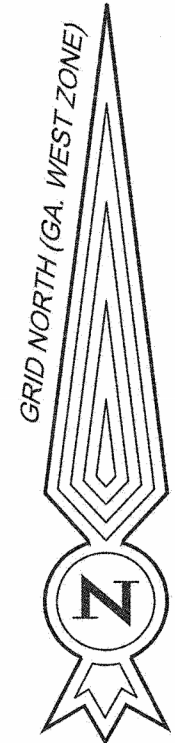
B. L. LAW CONSTRUCTION COMPANY, INC.
6704 OAK RIDGE COMMERCE WAY
AUSTELL, GA 30168
770-941-8545
STEVE@BLAWCONSTRUCTION.COM

HOWARDS WRECKER SERVICE

3980 SANDERS RD.
POWDER SPRINGS, GA 30127

All ideas, designs, arrangements, and plans indicated or represented by this drawing are owned by and the property of B. L. LAW CONSTRUCTION CO., INC. and were created, evolved, and developed for use on and in connection with the specified project. None of the ideas, designs, arrangements, or plans shall be used by or disclosed to any person, firm, or corporation for any purpose whatsoever without the permission of B. L. LAW CONSTRUCTION COMPANY INC. Reproduction hereof is a criminal offense under 18 U.S.C. 506 and unauthorized disclosure may constitute trade secret misappropriation. The ideas, arrangements and plans disclosed herein may be patented or be the subject of pending patent application.

Project Status	
Owner	
SITE	
Project number	Project Number
Date	Issue Date
Drawn by	SBL
C1	
Scale	As indicated

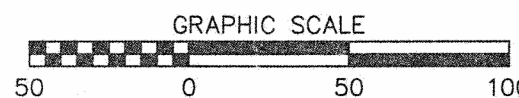
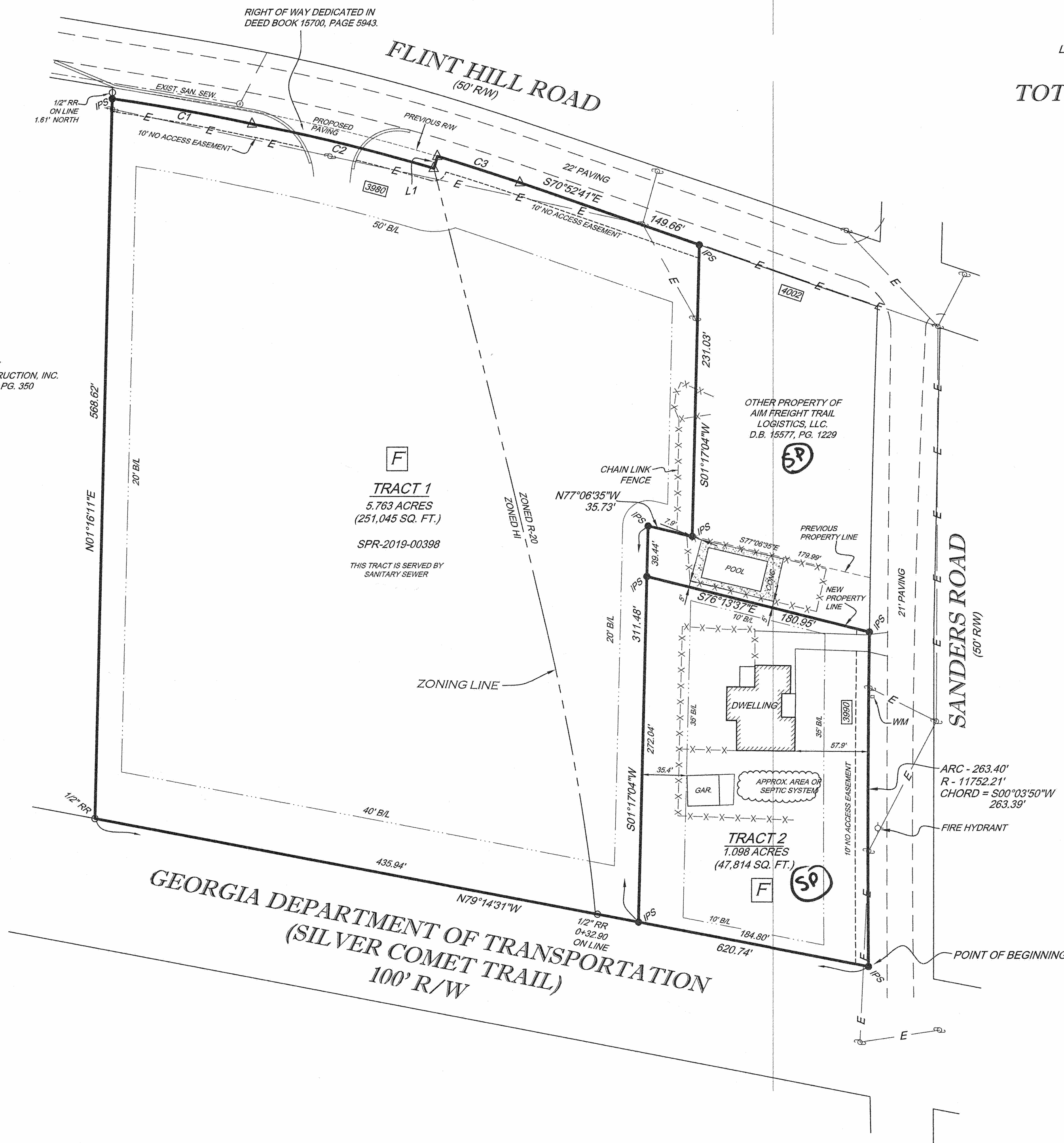


LINE	BEARING	DISTANCE
L1	N16°33'37"E	10.00'

CURVE	ARC LENGTH	RADIUS	CHORD BEARING	CHORD LENGTH
C1	111.85'	1522.60'	S79°44'37"E	111.82'
C2	147.57'	1520.12'	S76°13'15"E	147.51'
C3	166.41'	1530.12'	S72°08'32"E	166.41'

LOCATED IN LAND LOT 911, 19TH DISTRICT,
2ND SECTION, COBB COUNTY, GEORGIA

TOTAL AREA = 6.861 ACRES
298,859 SQ. FT.



LEGEND

CORNER MONUMENTATION:
● = IPS = CORNER SET WITH A 1/2" STEEL REINFORCING ROD
○ = CORNER FOUND
△ = UNMONUMENTED CORNER
⊙ = CORNER TO BE SET WHEN CONSTRUCTION PERMITS
— X — X — FENCE LINE
RR = STEEL REINFORCING ROD
OTP = OPEN TOP WATER PIPE
CTP = CRIMPED TOP WATER PIPE
PP = POWER POLE
CL = CENTERLINE
BL = BUILDINGLINE
RW = RIGHT OF WAY
L.L.L. = LAND LOT LINE
WATER MAINS = — W — W — W —
OVERHEAD POWER LINES = — E — E —
GAS MAINS = — G — G — G —
SANITARY SEWER MAIN = — SS — SS —
N/F = NOW OR FORMERLY OWNED BY
NSAB = NAIL SET AT BASE
NFAB = NAIL FOUND AT BASE
D.B. = DEED BOOK
P.B. = PLAT BOOK
R/W MON. = CONCRETE RIGHT OF WAY MONUMENT



B. L. LAW CONSTRUCTION COMPANY, INC.
6704 OAK RIDGE COMMERCE WAY
AUSTELL, GA 30168
770-941-8545
STEVE@BLAWCONSTRUCTION.COM

HOWARDS WRECKER SERVICE
3980 SANDERS RD.
POWDER SPRINGS, GA 30127

All ideas, designs, arrangements, and plans indicated or represented by this drawing are owned by and the property of B. L. LAW CONSTRUCTION CO., INC. and were created, evolved, and developed for use on and in connection with the specified project. None of the ideas, designs, arrangements, or plans shall be used by or disclosed to any person, firm, or corporation for any purpose whatsoever without the permission of B. L. LAW CONSTRUCTION COMPANY INC. Reproduction hereof is a criminal offense under 18 U.S.C. 506 and unauthorized disclosure may constitute trade secret misappropriation. The ideas, arrangements and plans disclosed herein may be patented or be the subject of pending patent application.

Project Status
Owner

PLAT

Project number 11/17/2025 Project Number
Date 11/17/2025 Issue Date
Drawn by SBL

C2

Scale 1" = 60'-0"